

SEMI-ANNUAL ENVIRONMENTAL MONITORING REPORT

Project Number: 43405-023

Reporting Period: January-June 2020

GEORGIA: URBAN SERVICES IMPROVEMENT INVESTMENT PROGRAM (TRANCHE 1) (FINANCED BY THE ASIAN DEVELOPMENT BANK)

Prepared by: Ketevan Chomakhidze, Environmental Specialist, “United Water Supply Company of Georgia”, Tbilisi, Georgia

For: The Ministry of Regional Development and Infrastructure of Georgia and the Asian Development Bank

Endorsed by: Maka Goderdzishvili, Head, Department of Environmental Protection and Permits, “United Water Supply Company of Georgia”

July, 2020

ABBREVIATIONS

ADB	Asian Development Bank
DC	Design Consultant
DEPP	Department of Environmental Protection and Permit
DPM	Department of Project Management
EA	Executing Agency
EARF	Environmental Assessment and Review Framework
EHS	Environmental Health & Safety
EIA	Environmental Impact Assessment
EIP	Environmental Impact Permit
EMP/ SSEMP	Environmental Management Plan/ Site-Specific Environmental Management Plan
ES/ SES	Environmental Specialist/ Senior Environmental Specialist
GoG	Government of Georgia
GRC	Grievance Redress Committee
GRM	Grievance Redress Mechanism
IPMO	Investment Program Management Office
USIIP	Urban Services Improvement Investment Program
IA	Implementing Agency
IEE	Initial Environmental Examination
MFF	Multi-tranche Financing Facility
MEPA	Ministry of Environmental Protection and Agriculture
MoRDI	Ministry of Regional Development & Infrastructure
NEA	National Environmental Agency
SC	Supervision Consultant
UWSCG	United Water Supply Company of Georgia
WSS	Water Supply & Sewerage

Contents

I.	INTRODUCTION	5
1.1	Preamble	5
1.2	Headline Information	5
II.	PROJECT DESCRIPTION AND CURRENT ACTIVITIES	6
2.1	Project Description	6
2.2	Project Contracts and Management	7
2.3	Project Activities During Current Reporting Period	12
2.3.1	Project Activities under TBI-01:	12
2.4	Description of Any Changes to Project Design	14
2.5	Description of Any Changes to Agreed Construction methods	14
III.	ENVIRONMENTAL SAFEGUARD ACTIVITIES	15
3.1	General Description of Environmental Safeguard Activities	15
3.2	Site Audit	16
3.3	Issues Tracking (Based on Non-compliance Notice).....	19
3.4	Trends	19
3.5	Unanticipated Environmental Impacts or Risks	20
IV.	RESULTS OF ENVIRONMENTAL MONITORING	20
4.1	Overview of Monitoring Conducted during Current Period	20
4.2	Trends	21
4.3	Summary of Monitoring outcomes	21
4.4	Material resources Utilization.....	21
4.4.1	Current Period	21
4.4.2	Cumulative Resources Utilization	22
4.5	Waste Management.....	22
4.5.1	Current Period.....	22
4.5.2	Cumulative Waste Generation.....	22
4.6	Health and Safety.....	23
4.6.1	Community Health and Safety	23
4.6.2	Workers Health and Safety.....	23
	Table 12: Summary of Workers Health and Safety	23
	Incident and Accident Summary.....	24
	Table 13: Incident and Accident Summary	24
4.7	Training	25
V.	FUNCTIONING OF THE SEMP	26
5.1	SEMP Review	26
VI.	GOOD PRACTICE AND OPPORTUNITY FOR IMPROVEMENT	26
6.1	Good Practice.....	26

6.2 Opportunities for Improvement.....	26
VII. SUMMARY AND RECOMMENDATIONS	27
7.1 Summary	27
7.2 Recommendations	27

I. INTRODUCTION

1.1 Preamble

1. This report represents the Semi-Annual Environmental Monitoring Review (SAEMR) for “Urban Services Improvement Investment Program” (USIIP), Tranche 1 and describes the period of January-June 2020.
2. This report is the 13th Semi-Annual EMR for the T1 of USIIP.

1.2 Headline Information

3. N/A During the reporting period no changes took place to the sub-project design and accordingly nothing has been updated or prepared.

II. PROJECT DESCRIPTION AND CURRENT ACTIVITIES

2.1 Project Description

4. The Urban Services Improvement Investment Program was developed as the Government's response to the lack of adequate and/or safe water supply, sewerage and sanitation in urban areas of Georgia. This is intended to optimize social and economic development in selected urban areas through improved urban water and sanitation services, and is financed by the ADB through its Multi-tranche Financing Facility. The Ministry of Regional Development and Infrastructure is the Executing Agency and the United Water Supply Company of Georgia, LLC is the Implementing Agency of the Investment Program. UWSCG is a 100% state-owned company.
5. The Investment Program will improve infrastructure through the development, design and implementation of a series of subprojects, each providing improvements in a particular sector (water supply and/or sewerage) in one town. Subprojects will rehabilitate existing infrastructure and/or create new and expanded infrastructure to meet the present and future demand. Water supply improvements will include source augmentation and head works, pumping systems, treatment facilities, transmission and distribution network. Sewerage improvement works will include construction and/or rehabilitation of sewer network, pumping stations, main collectors and Waste Water Treatment Plants.
6. Tranche 1 of the Investment Program includes:
 - Construction of Mestia Headworks (MES-01)
 - Improvement of Water Supply Infrastructure in Anaklia, Kutaisi and Poti (REG-01)
 - Construction of Mestia Water Treatment Plant and Reservoirs (REG-02)
 - UWSCG Office Building (TBI-01)
 - Construction of the Water Supply Network in Ureki (Ure-01)

Projects financed under Tranche 1:

7. **Mestia Water Supply Headworks (Contract MES-01).** The project comprises of the construction of a Tyrolean Weir as intake structure on Mestia Chala River for the capture of raw water. The discharge is estimated at minimum 1,000 liters/second in dry seasons. The location has been chosen for its altitude and the possibility to supply the water treatment plant, the adjoining reservoir and from there the largest part of the distribution network, by gravity. Apart from the intake, the scope of work comprises 10.75 km transmission lines to the site of Water Treatment Plant and a reservoir and the connection of this location to the distribution network.
8. The contract MES-01 was signed on October 10, 2011 with Joint Venture of Dagi LTD – Georgia and Enguri 2006 LTD – Georgia (which changed its corporate name to Enguri - New Construction LTD on 11 April 2013), the contract was completed on October 31, 2013. Post Construction Audit Report was prepared by UWSCG and approved by ADB.
9. **Kutaisi, Poti & Anaklia water supply infrastructures (contract Reg-01).** The scope of works includes improvement of water supply infrastructure in Anaklia, Kutaisi and Poti, in particular, reservoirs and pumping stations, transmission lines and distribution lines of water supply systems as well as a water treatment plant in Poti. The project envisages installation of water pipelines on 96 km. Concrete water reservoirs will be built on 5 places with total capacity of 35,000m³. The project also covers construction of 4 pumping stations (with total capacity of 4,516 m³/hr) as well as construction of water treatment facility.

10. United Water Supply Company of Georgia signed a contract (#UWSCG/ICB/CW-2013-REG-01) with Spanish Cobra Instalaciones y Servicios for implementation of Reg-01 project. The Contract was made effective on September 19, 2013.
11. Construction work was completed on May 16, 2016. Post Construction Environmental Audit was conducted in January 2017 by independent consultant and relevant report was submitted to ADB.
12. **Construction of Office Building of UWSCG in Tbilisi (TBI-01).** A detailed project for the construction of a new UWSCG head office was prepared and funded by the Government of Georgia. The contract (# CW/ICB / Office-01) for the construction of the above-mentioned head office was signed between the United Water Company of Georgia and the Georgian construction company DAGI Ltd on December 1, 2015. Date of commencement of civil works is December 29, 2015. The initial completion date for the above contract was 21.06.2017 and further extended until September 2020.
13. **MESTIA Water Supply Facilities (Contract REG-02).** The scope of works includes: a new water treatment plant (WTP); the rehabilitation of Tsniashi spring catchment; a new reservoir at Lanchvali (1,000 m³); a new reservoir at Shgedi (1,000 m³); transmission pipes of approximately 9,200 meters.
14. The Contractor had to design and build a Water Treatment Plant with a treated water standard that complies with the European standard for the drinking water quality and is defined in the Council Directive 98/83/EC. The WTP has a design capacity of 80 l/s to serve the projected population in 2040. Contract was signed with JV Ludwig Pfeiffer Hock und Tiefbau GmbH & Co. KG and Protecno Srl on 22 September 2014 and Notice-to-Proceed given on 08 December 2014. Contract completion date was May 2019. No Post-construction Audit report conducted as yet under REG-02 sub-project. Conducting of Post-construction environmental audit and preparation of relevant report was postponed due to COVID-19 outbreak. Post-construction audit report will be prepared by the end of September 2020.
15. **Construction of Water Supply and Wastewater Network in Ureki/Phase I (URE-01).** The project is simultaneously financed from Tranches I, II and III and therefore might be some overlap of T1-T3 Semi-Annual EMRs. The planned works under Tranche I included construction of Res-01 and Res-02 (2 x 3,000 m³ and 1 x 1,200 m³) and one water supply pumping station (78m³/h and 676 m³/h).
16. The Contract is signed with JV of Peri Ltd (Georgia) Leading Partner and Slon LLC (Azerbaijan) on October 28, 2014. Commencement date was November 24, 2014. Initial Completion date was scheduled on November 22, 2018 but due to changes in the design of project, which include the construction of an Aqueduct across the Natanebi River, the construction of Gabion wall to protect well fields from flooding and erosion, and the construction of an additional deep well No. 8 along the banks of the Natanebi River, completion date was extended to September 2019. The project is foreseen to serve 35,000 tourists and 5,400 local inhabitants by year 2040. Post Construction Audit will be conducted by independent consultant during the next reporting period and Post-construction Audit Report will be prepared and submitted to ADB.

2.2 Project Contracts and Management

17. The following agencies are involved in implementing the Investment program: Ministry of Regional Development and Infrastructure (MoRDI) is the Executing Agency (EA) responsible for management, coordination and execution of all activities funded under the loan. MoRDI has overall responsibility for compliance with loan covenants.

- 18.** Ministry of Environmental Protection and Agriculture of Georgia (MEPA). MEPA has the overall responsibility for protection of environment in Georgia. The Department of Permits of MEPA is responsible for reviewing EIAs and for issuance of the Environmental Permits. MEPA is the main state body pursuing state policy in the sphere of environment. Their functions for regulating economic or development activities with regard to environmental protection include:
- Issuing permits for project development (Environmental Decision)
 - Setting emission limits and issuing surface water intake and discharge consents
 - Responding to incidents and complaint
- 19.** United Water Supply Company of Georgia (UWSCG) is the implementing agency (IA), which is responsible for administration, implementation (design, construction and operation) and all day-to-day activities under the loan. The Investment Program Management Office (IPMO) under UWSCG is Project Management Department, the Head of Department is Ms. Ana Onashvili. Environmental issues are followed by the Department of Environmental Protection and Permits (DEPP) of UWSCG. The head of the department is Ms. Maka Goderdzishvili. Ms. Ketevan Chomakhidze is the Environmental Specialist of USIIP under the Department of Environmental Protection and Permits of UWSCG.
- 20.** UWSCG as responsible IA for the project recruited a Supervision Consultant (SC) – Eptisa under T1. The national and international team of consultants assists UWSCG in the supervision of the construction of subprojects under the USIIP. The SC also provides capacity building training to contractor staff in the management and operation and maintenance of the subprojects. The SC assists UWSCG in ensuring that the subprojects are implemented according to the specified standards. SC assignment also includes the supervising of the implementation of the environmental management plans.
- 21.** All mitigation measures during construction are implemented respectively by the contractor company: Dagi LTD (Georgia). All construction works under URE-01, MES-01, REG-01 and REG-02 projects are completed and therefore only TBI-01 sub-project is reported in this Semi-annual EMR. Contractor Company DAGI has Environmental and Health and Safety officer responsible for EH&S issues during construction process. Construction companies are monitored by the environmental specialist of Supervision Consultant/Eptisa, Irakli Legashvili and Environmental Specialist of UWSCG/USIIP Ms. Ketevan Chomakhidze. Environmental Specialists of SC and UWSCG/USIIP conduct routine observations and surveys of project sites, issues non-compliance notes. ES of Eptisa prepares quarterly environmental reports and submits to UWSCG.
- 22.** The Contractor, prior to the onset of the construction, is obliged to conduct a number of studies and develop environmental plans, including “Site Environment Management Plan” (SEMP). Such plans can be further subdivided into Topic Specific or Site Specific EMP’s. The number of such plans will depend upon the type of project, complexity and sensitivity of the receiving environment.
- 23.** Topic Specific EMPs are developed on a topic by topic basis. For example:
- Waste Management Plans;
 - Traffic Management Plans;
 - Protected Species Management Plans;
 - Water Management Plans.
- 24.** These plans are detailed and set out how the project will address potential issues identified in the impact assessment process and ensure that specific mitigation and monitoring

measures are fully implemented. A topic specific environmental management plan will cover all of the project.

- 25. The environmental specialist of UWSCG/USIIP, Ms. Ketevan Chomakhidze assists and advise the Department of Environmental Protection and Permits of UWSCG for implementation of USIIP in compliance with the ADB Safeguard Policy Statement 2009 and National Legislation, and oversee the work of CCs and SCs in safeguards compliance. She supports DEPP in implementation of Environmental Assessment and Review Framework (EARF), in particular, reviewing IEE/EIA Reports, overseeing implementation of EMPs, Reviewing and approving SEMP's and carrying out training and capacity-building activities in cooperation with Supervision Company "EPTISA". The ES prepares Semi-annual and annual environmental monitoring reports and submits to ADB.
- 26. Department of Environmental Protection and Permits of UWSCG is responsible for the implementation of mitigation and monitoring measures during construction and operation of subprojects under USIIP. Currently DEPP is staffed with a Head of Department and 5 specialists, those are responsible for environmental safeguard and construction permission issues.
- 27. ADB is the donor financing the Investment Program. Environmental management organization is shown in Figure 1 and Figure 2.

Figure 1: Structure Diagram of the Environmental Management Unit of UWSCG

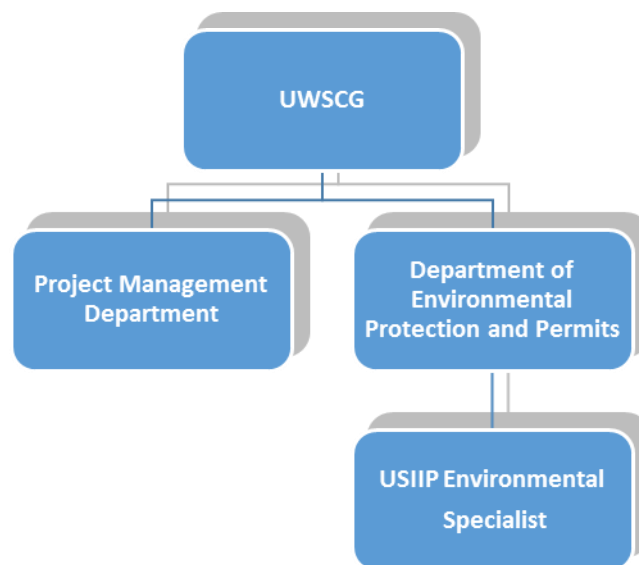
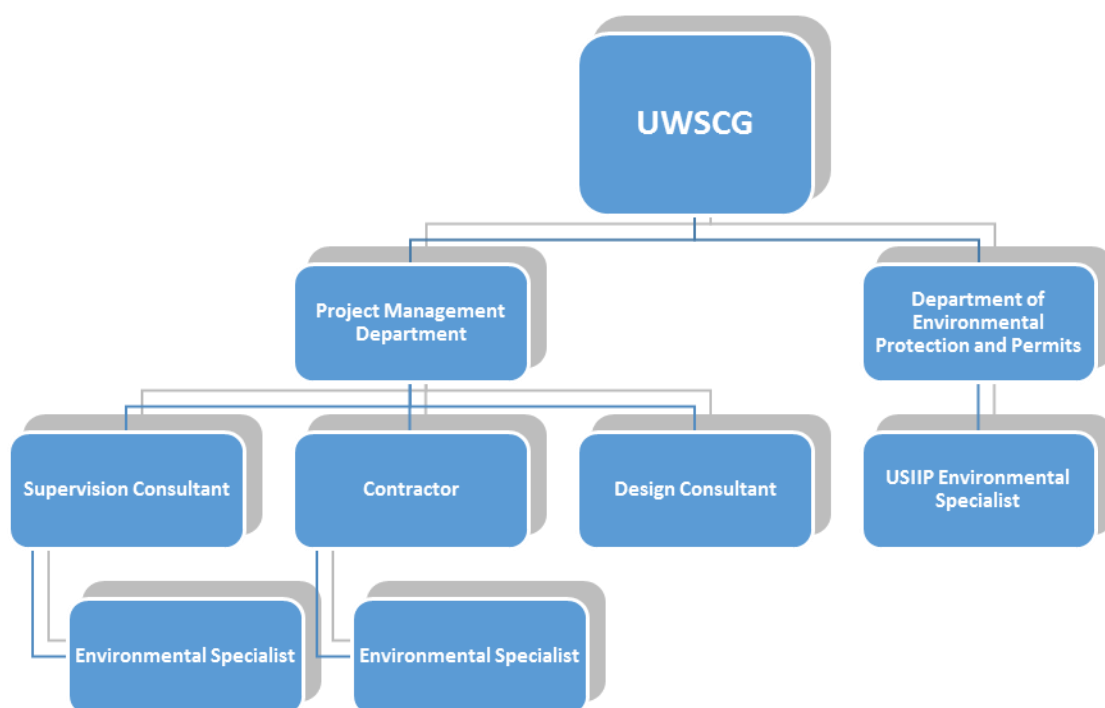


Figure 2: Structure Diagram of the Agencies Involved in Investment Program Implementation



28. A list of main organizations involved in the USIIP/T1 and relating to environmental safeguards is presented in Table 1 below.

Table 1: List of Main Organizations under USIIP/T1

Type of project participant	Name of Agency/Company	Environmental Staff	Name and contact details
Lender	Asian Development Bank	Head Office, Environmental Specialist, Portfolio, Results, Safeguards and Gender Unit (PSG), CWRD.	Nurlan Djenchuraev E-mail: ndjenchuraev@adb.org
		ADB RETA International-Regional Environmental Consultant	Keti Dgebuadze +995 577232937 E-mail: ketdgeb@yahoo.com

Type of project participant	Name of Agency/Company	Environmental Staff	Name and contact details
		Associate Safeguards Officer Georgia Resident Mission Asian Development Bank	Nino Nadashvili +995 595 070442 E-mail: nnadashvili@adb.org
Borrower	UWSCG	UWSCG, Department of Environmental Protection and Permits, Head	Ms. Maka Goderdzishvili Tel: +995 599 229925 E-mail: m.goderdzishvili@water.gov.ge
Borrower	UWSCG	UWSCG/IPMO Department of Projects Management, Head	Ms. Ana Onashvili Tel: +995 599 692090 E-mail: ana.onashvili@water.gov.ge
Borrower	UWSCG/USIIP/T3	Environmental Specialist	Ms. Ketevan Chomakhidze Tel: +995 577 380309 E-mail: Chomakhidzek@yahoo.com
Supervision Consultant	A Consortium of Consulting Firm led by Eptisa Servicios de Ingenieria S.L. (Spain) in association with SAFEGE (Belgium) and JSC Georgian Water Project (Georgia)	Environmental Specialist	Mr. Irakli Legashvili Tel: +995 577 177 016 E-mail: chem_ira@yahoo.com
Contractor URE-01	JV of Peri Ltd (Georgia) Leading Partner and Slon LLC (Azerbaijan)	Environmental H&S Specialist	Mr. Levan Asabashvili Tel: +995 599 962 693 Email: levani.asabashvili@mail.ru

Type of project participant	Name of Agency/Company	Environmental Staff	Name and contact details
Contractor MES-01	Joint Venture of Dagi LTD – Georgia and Enguri 2006 LTD – Georgia	Environmental Specialist	Mr. Nikoloz Neparidze Tel: +995 599 346 821 Email: nikoloz.neparidze@ludwigpfeiffer.com
Contractor REG-01	Spanish Cobra Instalaciones y Servicios	Environmental Specialist	Ms. Natia Babukhardia Tel: +995 595 150 444 Email: natiibab@gmail.com
Contractor REG-02	JV Ludwig Pfeiffer Hock und Tiefbau GmbH & Co. KG and Protecno Srl	Environmental Specialist	Mr. Nikoloz Neparidze Tel: +995 599 346 821 Email: nikoloz.neparidze@ludwigpfeiffer.com
Contractor TBI-01	Dagi LTD (Georgia)	Environmental H&S Specialist	Mr. Aleksandre Chumburidze Tel: +995 597 744 164 E-mail: a.tchumburidze@dagi.ge

2.3 Project Activities During Current Reporting Period

29. During the reported period construction activities were implemented only under TBI-01 sub-project, therefore only TBI-01 is reported in this Semi-annual EMR. Contractor DAGI intensified all activities to improve the progress of the works on sites. The Supervision Consultant “EPTISA” gave processed frequent instructions to the Contractor for the planning and outstanding documents preparation which shall ensure steady improvement of the works progress.

2.3.1 Project Activities under TBI-01:

TBI-01:

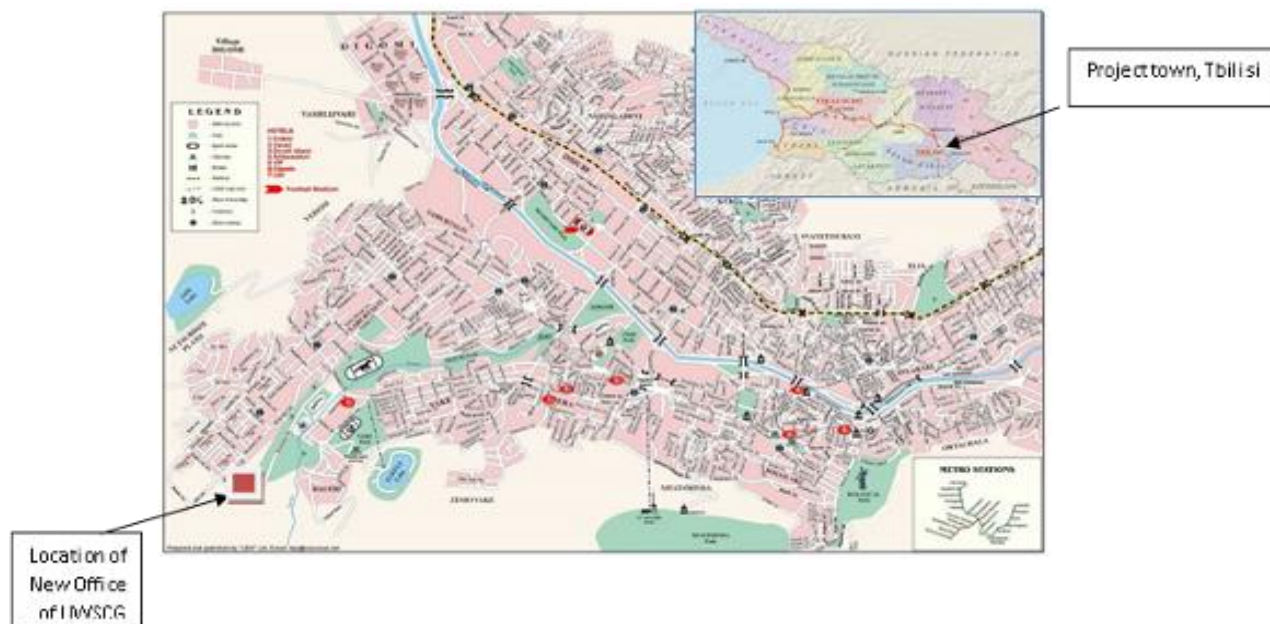
30. The overall progress of the contractor during January-June 2020 for the project TBI-01 is presented in table 2 below:

Table 2: TBI-01, project progress during the January-June 2020

<i>Tbilisi University Street, Construction of New Office Building for United Water Supply Company of Georgia (TBI-01)ia</i>	
<i>Site NOBUWSCG</i>	<i>Concrete works</i>
<i>Works undertaken during January-June 2020</i>	<i>180m³ pouring concrete / 105m³ pouring concrete for slab/ 75m³ pouring concrete for wall, columns.</i>
<i>Site NOBUWSCG</i>	<i>Formwork Mounting works</i>
<i>Works undertaken during January-June 2020</i>	<i>2000m² mounting formwork for elevator shaft wall, concrete columns and slab.</i>
<i>Site NOBUWSCG</i>	<i>Formwork dismantling works</i>
<i>Works undertaken during January-June 2020</i>	<i>2000m² dismantling formwork.</i>
<i>Site NOBUWSCG</i>	<i>Masonry block works</i>
<i>Works undertaken during January-June 2020</i>	<i>80m²</i>
<i>Site NOBUWSCG</i>	<i>Reinforcement Works</i>
<i>Works undertaken during January-June 2020</i>	<i>32 ton the used armature.</i>

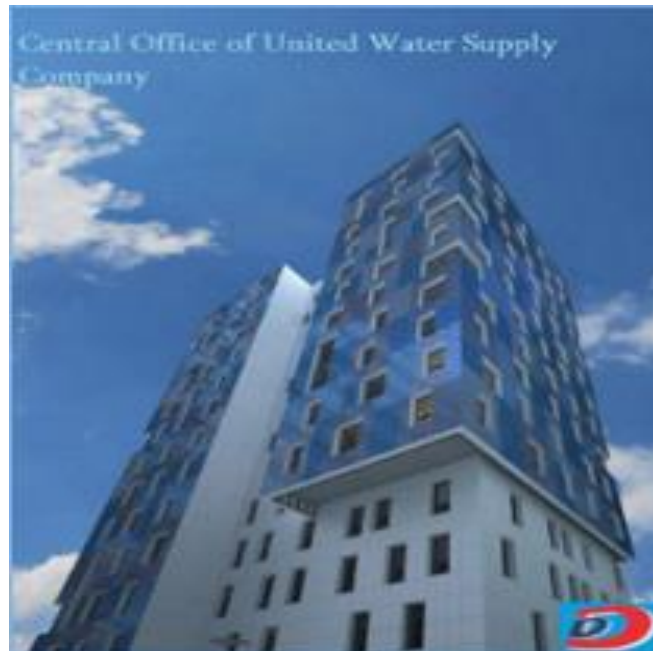
31. Map of Project Town and Location of Tbilisi Head Office is presented in the Fig.3 below:

Fig.3 Location of Head Office and Map of Project Town



32. Figure 4 below represents the building of the UWS CG's Head Office in Tbilisi after the completion of the TBI-01 project.

Figure 4: Design of Tbilisi head office:



33. During the reporting period, no construction works under the contracts - MES-01, MES-02, REG-01 and URE-01 were carried out, since all these subprojects were completed and, therefore, no construction works were carried out.

2.4 Description of Any Changes to Project Design

No changes.

2.5 Description of Any Changes to Agreed Construction methods

N/A

III. ENVIRONMENTAL SAFEGUARD ACTIVITIES

3.1 General Description of Environmental Safeguard Activities

- 34.** Individual and joint on-site monitoring activities were conducted by Environmental Monitoring Specialist of SC and Environmental Specialist of USIIP on a regular basis, until early March 2020 before restrictions were imposed by the Government of Georgia on site visits in connection with the outbreak of the new Coronavirus - COVID-19 and then resumed in May 2020.
- 35.** The Government of Georgia and its Ministry of Internally Displaced Persons from the Occupied Territories, Labour, Health and Social Affairs of Georgia, issued the General Guidelines Related to Infection (COVID-19) Caused by Novel Coronavirus (SARS-CoV-2) which applies to all sectors of economic activity.
- 36.** The General Guideline for COVID-19 was also developed by the Government of Georgia specifically for the construction sector (Please see Annex G of this report).
- 37.** Based on the above mentioned guidelines the construction staff must not appear in the workplace if they:
- Left the affected country over the past 14 days;
 - Were in close contact with infected person/persons for the past 14 days (they must be self- isolated/quarantined as per the rule);
 - Have symptoms of respiratory infection (coughing, temperature, sneezing, difficulty in breathing, general weakness etc.);
 - Are among the ones who have high risk of getting infected with COVID-19 or serious complications: over 70 years of age, people suffering from chronicle diseases (cardio-vascular diseases, diabetes, bronchial asthma and other respiratory diseases.
- 38.** Additional measure were carried out by Supervision Company EPTISA based on the requirements of the UWSCG and Emergency Response Plan of COVID 19 was developed for construction activities carried out under USIIP-T1 (please see Annex F).
- 39.** The monitoring activities during the reporting period included monitoring of compliance of construction activities to the IEE/EMP and SEMP requirements under TBI-01 sub-project.
- 40.** Environmental Monitoring Specialist hired under the TBI-01 project Mr. Aleksandre Chumburidze conducted the day-to-day monitoring of the construction sites, developed the monthly monitoring reports and submitted to SC/Eptisa.
- 41.** Environmental Monitoring Specialist of Eptisa, Mr.Irakli Legashvili conducted monthly monitoring of project sites under T1 and developed Non-Conformance Notices were required. He also developed quarterly environmental monitoring reports based on the monthly reports submitted by Contractor and environmental site inspections and submit to UWSCG/USIIP.
- 42.** Environmental Specialist of UWSCG/USIIP Ms. Kate Chomakhidze performed monitoring of contractor's performance in accordance with the requirements of approved IEE/EMPs, SEMPs, and other environmental commitments of the contractor. USIIP/ES developed

Semi-annual monitoring reports and submitted to ADB based on the quarterly reports prepared by SC and monitoring results.

43. In accordance with the requirements of IEEs, Contractor is required to undertake parametric measurements and observations on air quality and noise and socio-cultural resources. The monitoring guidelines were set as shown in the Table 3 below for TBI-01 sub-project.

Table 3: Parametric Measurement Guidelines

Parameters	Frequency & Location	Remarks
TBI-01		
Air Quality	Air Quality Every 3 months UWSCG/Office Construction Site and near the sensitive receptors	Watering site during excavation works to avoid dust spreading Conduct measurements of Dusts Mg/m ³ ; CO Mg/m ³ ; NO ₂ Mg/m ³ ; SO ₂ Mg/m ³
Noise	Noise, Every 3 months Mukhnari Reservoir, Networks, Transmission Main near the sensitive receptors	Ensure that all equipment & vehicles used for construction activity are in good condition Limiting working hours to 8 am – 6 pm
Incorrect surplus/waste soil management	Monthly during the site Inspection and audit	Utilize surplus/waste soil for beneficial purposes such as in construction or to raise the ground-level of low lying sites. Dispose extra waste soil at special disposal place identified by Municipality

44. There are no protected areas, wetlands, mangroves, or estuaries. Trees, vegetation (mostly shrubs and grasses) in the subproject sites are those commonly found in built-up areas. The geological structure of the area is stable and no potential land subsidence is foreseen.

3.2 Site Audit

45. The schedule of individual and joint monitoring and inspection of construction site under TBI-01, conducted by Environmental Specialists of USIIP and SC/Eptisa is provided in the Table 4 below.

Table 4: The Schedule of Conducted Audits and Monitoring of TBI-01 sub-project during the Reporting Period

Date of visit	Name of Company Name of Contract	Auditors name,	Purpose of audit	Summary of any significant findings	Cross reference to Audit report
Continuously during reporting period January-June 2020	DAGI Ltd	Environmental and H&S Specialists of Contractor Mr. Aleksandre Chumburidze	Day-today monitoring of sites	Poor housekeeping H&S issues of workers	Environmental Specialists of CC fill out the weekly checklists and develop monthly monitoring reports and Near Missis reports Please see Annex D (Weekly Checklists) and Annex E (Near Missis)
23 January 2020		Head, Department of Environmental Protection and Permits of UWSCG Maka Goderdzishvili Environmental specialists of USIIP Ms.Ketevan Chomakhidze Environmental monitoring specialists of SC/EPTISA Mr.Irakli Legashvili	Monthly monitoring of construction sites	Safety rules during electrical equipment use should be respected Construction waste should be removed timely and proper disposed Dry tress should be removed from sites in accordance with national regulations and agreement with the Tbilisi City Hall	Verbal instruction has given to contractor to improve the situation
27 February, 2020		Environmental and H&S Specialists of Contractor Mr. Aleksandre Chumburidze Environmental monitoring	Monthly monitoring of construction sites	Safety norms during works at the height should be respected to avoid workers damage Construction waste should be removed timely and proper disposed	Verbal instructions were given to contractor and Non-compliance notice was issued by SC (please see

Date of visit	Name of Company Name of Contract	Auditors name,	Purpose of audit	Summary of any significant findings	Cross reference to Audit report
		specialists of SC/EPTISA Mr.Irakli Legashvili		Site internally should be arranged properly and cleaned regularly Special equipment during working at heights should be used Construction waste should be removed timely and proper disposed	Annex C)
3 March 2019		Head, Department of Environmental Protection and Permits of UWSCG Maka Goderdzishvili Environmental specialists of USIIP Ms.Ketevan Chomakhidze Environmental monitoring specialists of SC/EPTISA Mr.Irakli Legashvili	Monthly monitoring of sites	Site internally should be arranged properly and cleaned regularly Construction area and wooden materials should be freed from big nails to avoid personnel damage. Used nails should be collected regularly to avoid workers damage.	Verbal instructions were given to contractor
May 2020		Environmental specialists of USIIP Ms.Ketevan Chomakhidze Environmental monitoring specialists of SC/EPTISA Mr.Irakli Legashvili	Monthly monitoring of sites	Safety norms during works at the height should be respected to avoid workers damage Construction waste should be removed timely and proper disposed	Verbal instructions were given to contractor
June 2020		Environmental monitoring specialists of	Monthly monitoring of sites	Daily presence of HSE officer at the construction territory is	Verbal Instruction has given to contractor to

Date of visit	Name of Company Name of Contract	Auditors name,	Purpose of audit	Summary of any significant findings	Cross reference to Audit report
		SC/EPTISA Mr.Irakli Legashvili		necessary High visible safety signs/tapes, grids and barriers should be installed at the each floor of the building to avoid incidents of workers falling	improve the situation and send CAP to SC and UWSCG

3.3 Issues Tracking (Based on Non-compliance Notice)

46. One non-compliance notice had been observed during the site visits under TBI-01 sub-projects. The contractor was always informed on the detected non-compliances and were demanded to improve on the deadline set and send photos of improvements made together with the Corrective Action Plans. Environmental team of EPTISA and UWSCG/USIIP monitored the improvements during the next monitoring visits. Non-compliance Notice issued during the reporting period is presented in ANNEX C of this Semi-Annual EMR.
47. A summary of the identified environmental issues for January-June 2020 is presented in table 5 below.

Table 5: Summary Table TBI-01

Total Number of Issues for Project	12
Issues Opened This Reporting Period	2
Issues Closed This Reporting Period	10
Percentage Closed	83%

3.4 Trends

48. To identify trends in environmental issues information from previous Semi-Annual EMR (July-December 2019) is used. The summary of the issues is provided in the table 6 below.

Table 6: Summary of identified trends in environmental issues, TBI-01

Semi-Annual EMR No	Total No of Issues	% issues Closed	% issues closed late
July-December 2019	8	89%	11%
January-June 2020	12	83%	17%

3.5 Unanticipated Environmental Impacts or Risks

N/A

IV. RESULTS OF ENVIRONMENTAL MONITORING

4.1 Overview of Monitoring Conducted during Current Period

49. Noise standards and air pollution guidelines defined by IFC/WHO 1999, are presented in the Table 7 and 8 below.

Table 7: Noise Level Guidelines

Noise	dBA		dBA	
	National Regulations		WHO	
Receptor	Daytime 07:00 - 22:00	Nighttime 22:00 - 07:00	Daytime 07:00- 22:00	Nighttime 22:00- 07:00
Residential; institutional; educational	55	45	55	45
Industrial; commercial	70	70	70	70

50. Air pollution standards by IFC/WHO 1999, are presented in the Table 8 below.

Table 8: Air pollution Guidelines

Contaminants	IFC/WHO Guideline Value (Limit mg/m ³)
1	2
Inorganic dust	(*IFC does not have a standard for "inorganic dust". Instead IFC applies standards for PM2.5 and PM10). PM10 – 0,02/1 Year 0,05/24 Hour PM2,5-0,01/1 Year 0,025/24 Hour
Carbonic monoxide	n/a
Nitrogen dioxide (NO ₂)	0,2/ 1 Hour 0,04/1 Year
Aldehyde	n/a

51. Monitoring measurements under TBI-01 project were conducted by the National Environmental Agency under the Ministry of Environmental Protection and Agriculture in the nearest sensitive receptors to construction sites in 6 March 2020 (Please see Table 9 and

Annex A). Location and data are included in the Table below. The next monitoring measurements will be conducted in September 2020 and results will be reflected in the next EMR July-December 2020.

52. According to data received in 6 March 2020 under TBI-01 project, ambient air quality and noise level do not exceed the standards required by National Regulations and World Health Organization (IFC/WHO),1999, and therefore no additional mitigation measures are required. IFC/WHO standards for Noise and Air pollution are presented in Table 7 and 8 above. It should be noted also that measurements carried out at construction sites, were temporary and conducted during the daytime from 14:00pm to 16:30pm and no complaints were received from the local population about the noise during the reporting period.

Table 9: Monitoring Measurements under TBI-01 Project

N	Place of measurement	Coordinates	Results				
			Dusts Mg/m3	CO Mg/m3	NO2 Mg/m3	SO2 Mg/m3	Noise dBA (1-hour)
	National Environmental Standard (Maximum Permissible Level)		0,5	5,0	0,2	0,5	55 Residential; Institutional; Educational 70 Industrial; commercial
30 March 2020							
1	University Street N 41°43'05.9" EO 44°43'05.9"		0.119	0.53	0.003	<0.1	48.3

4.2 Trends

53. Environmental Quality standards of ambient noise and air pollution is within the national and international regulations and no further deterioration is expected.

4.3 Summary of Monitoring outcomes

54. According to data received during the reporting period noise level and ambient air quality do not exceed the standards required by National Regulations and World Health Organization (IFC/WHO),1999, therefore no additional mitigation measures are needed.

4.4 Material resources Utilization

4.4.1 Current Period

TBI-01 sub-project

55. The table 10 below provides utilization of water and electricity during the reporting period, January-June 2020, under TBI-01 project only.

Table 10: Material Resources Utilization under TBI-01 project

Water and Electricity meters indication use on the UWSCG's Head Office Construction Site Tbilisi University Street No 006/003 January-June 2020	
Water M ³ Indication	210 M ³
Electricity KV Indication	5500 KW

4.4.2 Cumulative Resources Utilization

N/A

4.5 Waste Management

4.5.1 Current Period

TBI-01 sub-project

56. The contract was signed between LLC Dagi and the LTD Tbilservice Group for waste disposal (Agreement № 2/18-1167). Amount of Waste and Disposal Schedule is provided in the table 11 below: An Acceptance-Delivery Act signed by CC and sub-contractor is available at construction site.

Table 11: Waste Disposal Schedule

Table for Waste January-June 2020							
Site NOBUWSCG Tbilisi University Street № 006/003							
Waste Code	Waste Name	Household Yes/No	Quantity Piece / kg / T/ M ³	Hazardous Yes/No	Hazardous Specification	Recovery operations	Basel Convention Code (Y)
20 01 07	Wood Waste	No	19/ M ³	No		R1	
20 01 01	Cardboard	No	11KG	No		D1	

4.5.2 Cumulative Waste Generation

N/A.

4.6 Health and Safety

4.6.1 Community Health and Safety

57. During the reporting period no incidents have occurred under TBI-01 sub-projects which will result or could have resulted in Community Health and Safety issues.
58. Measures undertaken for prevention of COVID-19 at construction site is presented in chapter 34-38 of this report.

4.6.2 Workers Health and Safety

TBI-01 project

59. DAGI LTD's HSE Manager is performing every day monitoring, induction and supervision of ongoing works according to HSE standards and by requirements of ADB/UWSCG/EPTISA and providing relevant reports on a regular basis taking into account any recommendations given by ADB/UWSCG/EPTISA engineers.
60. Health & safety and environment issues which were covered during the reporting period are as follows:
- PPE;
 - Housekeeping;
 - Reinforcement;
 - Protected all trees nearby construction to avoid its damage;
 - Ground works;
 - Manual works;
 - Removal waste;
 - Induction all visitors
 - Toolbox Talk
 - Dust and Noise Measurements
 - Upgrade Safety Hard and Warning Barricade

61. Summary of the workers H&S Statistics including new misses for the reporting period (January-June 2020) are presented in table 12 below:

Table 12: Summary of Workers Health and Safety

SHE Statistic	January	February	March	April	May	June	Total
Number of Personnel	31	18	18	16	10	14	107
Working Hours Performed	3728	3456	3456	3000	2000	2100	17740
First Aid Injuries	0	0	0	0	0	0	0
Near Misses	4	4	7	2	1	1	19
Serious Dangerous	0	0	0	0	0	0	

SHE Statistic	January	February	March	April	May	June	Total
Occurrence /Significant Near Miss							0
Complaints	0	0	0	0	0	0	0
Stop working	0	0	0	0	0	0	0
Lost of working days	0	0	0	0	0	0	0
Restricted workday	0	0	0	0	0	0	0

Incident and Accident Summary

62. H&S specialist of contractor Mr. Aleksandre Chumburidze keeps a register of incidents/Accidents/Near Misses. The summary of Incidents and Accidents during the reporting period is provided in the table 13 below:

Table 13: Incident and Accident Summary

ITEM	Total
Fatality	0
Accident	0
Property Damage	0
Type	Total
First aid	0
Near Miss	19

63. Summaries findings of monitoring of Near Misses and given instruction to improve the situation during the reporting period – January-June-2020 are presented in the paragraphs below.

64. These Near Misses include but are not limited to:

- Worker not used fall arrest system (safety belt);
- Not installed safety hard barricade;
- On the wooden material there are nails, which can damage the all personals on the construction site

65. The following instructions were given to workers by H&S specialist of contractor Mr.Aleksandre Chumburidze:

- All person must use fall arrest or (safety belt) who works at the Height;
- Safety hard barricade has to be timely installed;
- All wood materials must be cleaned or sealed separately storage.

66. Near Misses Reports issued under TBI-01 project during the reporting period, January-June 2020 are presented in Annex E of this report

4.7 Training

67. TBI-01: The EH&S specialist of contractor DAGI, Mr. Alexander Chumburidze, conducted regular trainings for workers on Health and Safety Issues, as part of ongoing efforts to improve health and safety and reduce the number of accidental injuries occurring during the construction, DAGI has developed Near Misses reports in accordance with the ADB requirements. This form has been developed to be simple and easy to fill out so that workers and supervisors can quickly complete and submit them in a time-effective manner.

V. FUNCTIONING OF THE SEMP

5.1 SEMP Review

68. No SEMP has been prepared under USIIP/T1 during the reporting period.

69. The following SSEMPs were prepared by contractor, endorsed by SC/EPTISA and approved by UWSCG/USIIP within the framework of Ure-01, Reg-02 and Office-01 projects during the previous reporting periods:

URE-01:

- SSEMPs for Ureki Well Fields (May 2016)
- Reservoir#1 (November 2016)
- Water Supply Pumping Station (November 2016)
- Reservoir #2 (Laituri Reservoir) (August 2018);

REG-02/Mestia Water Supply Component

- Zargashi Reservoir
- Lanchvali Reservoirs
- Water Treatment Plant in Zargashi

TBI-01:

- Construction of Tbilisi Head Office

70. All above mentioned SEMPs were prepared by Contractor before commencement of construction activities and reviewed/commented by the RETA International-Regional Environmental Consultant of ADB under RETA 8663 - Ms. Ketii Dgebuadze.

71. It should be mentioned that SEMP prepared under TBI-01 for construction of UWSCG head office sub-projects is effective.

72. Due to COVID-19 circumstances it is necessary to update SEMPs for anti-COVID measures and reflect it within the next Semi-annual EMR (due in Jan 2021).

VI. GOOD PRACTICE AND OPPORTUNITY FOR IMPROVEMENT

6.1 Good Practice

N/A

6.2 Opportunities for Improvement

N/A

VII. SUMMARY AND RECOMMENDATIONS

7.1 Summary

- 73.** During the reported period construction activities were implemented only under TBI-01 sub-project. Contractors have intensified all activities to improve the progress of the works on sites. Individual and Joint on-site monitoring activities were conducted by Environmental Monitoring Specialist of SC/EPTISA and UWSCG/USIIP on a regular basis, until early March 2020 before restrictions were imposed by the Government of Georgia on site visits in connection with the outbreak of the new Coronavirus - COVID-19 and then resumed in May 2020.
- 74.** The Government of Georgia and its Ministry of Internally Displaced Persons from the Occupied Territories, Labour, Health and Social Affairs of Georgia, issued the General Guidelines Related to Infection (COVID-19) Caused by Novel Coronavirus (SARS-CoV-2) which applies to all sectors of economic activity.
- 75.** The General Guideline for COVID-19 was also developed by the Government of Georgia specifically for the construction sector.
- 76.** Additional measure were carried out by Supervision Company EPTISA based on the requirements of the UWSCG and Emergency Response Plan of COVID 19 was developed for construction activities carried out under USIIP-T1.
- 77.** Environmental Monitoring Specialist of Eptisa, Mr.Irakli Legashvili conducted monthly monitoring of project sites under T1 and developed Non-Conformance Notice were required. He also developed quarterly environmental monitoring reports based on the monthly reports submitted by Contractor and environmental site inspections and submit to UWSCG.
- 78.** The monitoring activities included monitoring of compliance of construction activities to the IEE/EMP and SEMP requirements under TBI-01 sub-project.
- 79.** Environmental Specialist of USIIP Ms. Kate Chomakhidze performed monitoring of contractor's performance in accordance with the requirements of approved IEE/EMPs, SEMPs, and other environmental commitments of the contractor. USIIP/ES developed Semi-annual monitoring reports and submitted to ADB based on the quarterly reports prepared by SC and monitoring results.
- 80.** In accordance with the IEE, and the accompanying Environmental Monitoring Plan (EMP), the Contractor is required to undertake parametric measurements and observations on air quality, noise and socio-cultural resources. Locations for the measurements were initially identified in the IEE.
- 81.** Necessary instructions have been given to the Contractor by UWSCG and SC to follow the EMP's and SSEMP's requirements under TBI-01 sub-project.

7.2 Recommendations

- 82.** During the reporting period, Tranche-1 of this Investment Program is being implemented in compliance with the ADB Safeguards Policy Statement, 2009, National Legislation and overall EARF.
- 83.** Contractors to update SEMPs for anti-COVID measures – Q3 2020.
- 84.** More detailed recommendations/next steps for the implementation of T1 during the next reporting period July-December 2020 are provided in the table 14 below:

Table 14: Recommendations to Address Environmental Issues under TBI-01 sub-project

Recommendations TBI-01 sub-project	
TBI-01 Construction site	
Daily presence of HSE officer at the construction territory is necessary	The contractor has been given strict instructions to improve the situation and to constantly maintain improved standards at the sites by the mid of July 2020.
Trees at the construction area drying at visual observation. Needs proper investigation. In case trees are dried it should be replaced with new once	
Safety norms during works at the height should be respected to avoid workers damage	
Special equipment during working at heights should be used	
Construction waste should be removed timely and disposed properly.	
Site internally should be arranged properly and cleaned regularly	

85. Conduct Post-Construction Environmental Audit and prepare corresponding Audit report under Reg-02/Mestia Water Supply sub-project by the September 2020.

86. Conduct monitoring of Ambient Noise and Air quality under TBI-01 project at the nearest sensitive receptors in September 2020.

Table 16: The Specific Plan for Environmental Measurement under TBI -01 Project

Parameters	Quarterly measurement
Dust	September 2020
PM _{2.5}	September 2020
PM ₁₀	September 2020
Vibration	September 2020
Carbon monoxide	September 2020
Nitrogen dioxide	September 2020
Sulfur dioxide	September 2020
Noise	September 2020

ANNEX A: ENVIRONMENTAL QUALITY MEASUREMENT DATA

TBI-01 Sub-project, 13 March 2020

საპარტოვლოს გარემოს დაცვისა და სოფლის მეურნეობის სამინისტრო
MINISTRY OF ENVIRONMENT PROTECTION AND AGRICULTURE OF GEORGIA

 სსიპ გარემოს ეროვნული სააგენტო
LEPL NATIONAL ENVIRONMENTAL AGENCY

N 12/1-225 13 03 2020


შპს "დაგი"-ს დირექტორს
ბ-ნ მიხეილ შარანგიას

ბატონო მიხეილ,

საქართველოს გარემოს დაცვისა და სოფლის მეურნეობის სამინისტროს სსიპ „გარემოს ეროვნულ სააგენტო“-სა და შპს „დაგი“-ს შორის 2020 წლის 27 თებერვალს გაფორმებული ფასიანი მომსახურების შესახებ №ფმ-3/169 ხელშეკრულების შესაბამისად, გაწვდილი, ქ. თბილისში, უნივერსიტეტის ქუჩაზე, თქვენს მიერ მითითებული ატმოსფერული ჰაერის ერთ წერტილში ჩატარებული გაზომვების შედეგებს.

დანართი: 1 გვ.

პატივისცემით,

სააგენტოს უფროსი  ანდრო ასლანიშვილი

ქ. თბილისი, უნივერსიტეტის ქ№2-ის მიმდებარე ტერიტორიაზე

ჩატარებული გაზომვების შედეგები 06.03.2020წ.


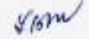
(ხელშეკრულება №ფმ 3/169)

№	გაზომვის ადგილი	კოორდინატები	CO მგ/მ ³	მტვერი მგ/მ ³	NO ₂ მგ/მ ³	ხმაური დბ
1	უნივერსიტეტის ქუჩა №2	N 41°43'05.9'' EO 44°43'05.9''	0.53	0.119	0.003	48.3
	ზღვრულად დასაშვები ნორმები		5.0	0.5	0.2	55

შემსრულებლები:

სამმართველოს უფროსი

მთავარი სპეციალისტი

 გ. კარგარეელი
 ო. ყენია

შეთანხმებულია:

გარემოს დაბინძურების მონიტორინგის

დეპარტამენტის უფროსი



მ. არაბიძე

მიღება - ჩაბარების

აქტი № 225

ქ. თბილისი

“ 13 “ მარტი 2020 წ.

აქტი შედგენილია მასზედ, რომ საქართველოს გარემოს დაცვისა და სოფლის მეურნეობის სამინისტროს სსიპ “გარემოს ეროვნულ სააგენტო“-სა (“შემსრულებელს“) და შპს „დაგი“-ს (“დამკვეთს“) შორის 2020 წლის 27 თებერვალს გაფორმებული ფასიანი მომსახურების შესახებ №3/169 ხელშეკრულების შესაბამისად შემსრულებელმა გაუწია, ხოლო დამკვეთმა მიიღო ქ. თბილისში, უნივერსიტეტის ქუჩაზე, დამკვეთის მიერ მითითებული ატმოსფერული ჰაერის ერთ წერტილში – მტვერის, ხმაურის, ნახშირჟანგისა და აზოტის დიოქსიდის გაზომვის შედეგები, რომლის ღირებულებაც შეადგენს 140.00 (ასორმოცი) ლარს დღგ-ს ჩათვლით.

ჩააბარა

გარემოს ეროვნული სააგენტოს
სისტემური მართვისა და ადამიანური
რესურსების მართვის სამმართველოს
მთავარი სპეციალისტი ნ. ჩიქოვანი



მიიღო

შპს „დაგი“-ს დირექტორი მ. შარანგია

ANNEX B: PROJECT PHOTOS

Photo: UWSCG Office Building, TBI-01






ANNEX C: NON-COMPLIANCE NOTICES

TBI-01 Projects

Non-Compliance Notice

27 February 2020

Project: USIIP	Non-compliance Notice TBILISI	
Contract No: TBI-01		
Contractor: DAGI		
Reference: Tbilisi – NEW OFFICE BUILDING FOR UWSCG		
This notice is to advise you, the prime Contractor, on the referenced Contract, of the following notice on environmental measures to be implemented urgently .		
NON-COMPLIANCE IN TBILISI		
Construction of New Office Building for UWSCG		
<ul style="list-style-type: none"> - Safety norms during works at the height should be respected to avoid workers damage - Construction waste should be removed timely and proper disposed - Site internally should be arranged properly and cleaned regularly - Special equipment during working at heights should be used - Construction waste should be removed timely and proper disposed 		
		
All these conditions have to be remedied within three days (by the 3 March 2020) by the prime Contractor (Dagi).		
Date of site visits: 27.02.2020		
Irakli Legashvili EPTISA - Environment		

ANNEX D: WEEKLY MONITORING CHECK-LIST (DAGI)

ყოველკვირეული გარემოსდაცვითი მონიტორინგი
Weekly Environmental Monitoring

Name of the Contractor and project number/lot მშენებელი კონტრაქტორის სახელი და პროექტის/ლოტის ნომერი	Dagi LTD (საქართველო); თბილისის საბურთალოს რ-ნაკვეთის №14 Contact: No CW/ICB/Office-01	
კონტრაქტის #: Contract #:		
Description and Location of the Site სამშენებლო საიტის ადგილმდებარეობის აღწერა	This subproject is located in Tbilisi, at the University street. There is no intensive traffic on University street (no traffic lights and traffic jam). Geographically, it is situated at 41°43'07.05" latitude and 44°43'10.48" longitude, app 547m above the SL	
Implementing Agency განმახორციელებელი სააგენტო	შპს „საქართველოს გაერთიანებული წყალმომარაგების კომპანია“ (United Water Supply Company of Georgia), LLC	
Supervisor's Identity (name, last name, contact information and signature) სარედაქციო კომპანიის წარმომადგენლის სახელი, გვარი, საკონტაქტო ინფორმაცია და ხელმოწერა	Supervisor's company: LLC Eptisa (სარედაქციო კომპანიის) : შპს ეპტისა სახელი გვარი: დავით ჩხუმიძე Name: David Chkhvadze მობილური ნომერი: 577 00 41 49 Mobile Phone: 577 00 41 49	ხელმოწერა/ Signature: 
Current Stage of Civil Works სამშენებლო სამუშაოების მიმდინარე სტატუსი	მიმდინარე, On-going	
Weather Conditions აშინდის პირობები	Good კარგი	
ობიექტის გარემოს დაცვაზე პასუხისმგებელი პირი (კონტრაქტორი) Staff responsible for environment/safety at the site (contractor)	სახელი: ალექსანდრე ჭუმბურიძე Name: Alexandre Tchumburidze	ხელმოწერა/ Signature: 
გარემოს დაცვის სპეციალისტი (კონტრაქტორი) Environmental Specialist (contractor)	სახელი: ალექსანდრე ჭუმბურიძე Alexandre Tchumburidze	ხელმოწერა/ Signature: 
Date/თარიღი: 30.03.2020.		

N	Documents and Facts to be Examined შესამოწმებელი დოკუმენტები და ფაქტები	კა/ yes	არა/ no	ნაწილ- Partially	არ უნდა N.A	შენიშვნა / Comment
1	EMPs/SSEMPs, Protocols and Reports					
1.1	Contractor's Site-specific Environmental Management Plan (SSEMP) is prepared, reviewed and approved by PIU prior to contractor commencing the works. მუშუადება და დამტკიცებულია საიტ- სპეციფიკური გარემოსდაცვითი მართვის გეგმა.	✓				Construction of Head office for United Water Supply Company of Georgia", March 2016
1.2	Construction contractor has National Environmental Specialist in staff. მშენებელკონტრაქტორს დასაბუთებულია ხელშეკრულება ადგილობრივ გარემოსდაცვით საერთაშორისო სპეციალისტთან.	✓				ხელშეკრულება გაფორმდა პროექტის დაწყებისთანავე
1.3	Construction contractor has International Environmental Specialist in staff. მშენებელკონტრაქტორს დასაბუთებულია ხელშეკრულება საერთაშორისო გარემოსდაცვით საერთაშორისო სპეციალისტთან.		✓			ხელშეკრულება არა გაფორმებული
1.4	Monthly environmental monitoring reports are prepared by the Contractor and submitted to the Supervision Consultant მონაცემები გარემოსდაცვითი მართვის გეგმის განხორციელების ყოველთვიური ანგარიშები კონტრაქტორის მიერ და წარედგინება კონსულტანტსათვის	✓				ყოველთვიური ანგარიშები კონსულტანტის მიერ უგზავნება კონტრაქტორს
1.5	Emergency Response Plan is prepared and approved. მუშუადება და მიღებულია ავარიული სიტუაციებზე რეაგირების გეგმა .	✓				მიღებულია ავარიული სიტუაციებში მოქმედების გეგმა
1.6	Health and Safety Management Plan is prepared and approved. მუშუადება და მიღებულია ჯანდაცვისა და უსაფრთხოების მართვის გეგმა და ჯანდაცვისა და უსაფრთხოების მართვის სისტემა მშენებლობის ფაზისათვის.	✓				მიღებულია ჯანდაცვისა და უსაფრთხოების მართვის გეგმა
1.7	Complaints log exists on construction site, საიტზე არსებობს საჩივრების აქტის ჟურნალი	✓				სამშენებლო საიტზე არსებობს საჩივრების აქტის ჟურნალი
1.8	Site inspection non-compliance notices issued and corrective action requests implemented. მუშაობის მუშაობის მონაცემები და წარედგინება კონტრაქტორისთვის და მაკონტროლებელი ქმედების განხორციელება.	✓				ტექ უსაფრთხოების სტანდარტის დაცვით მართვის კლდის გამოწვევების გამაგრებული კლდის ნაყარი გრუნტი.

1.9	Training/Capacity building activities undertaken as per EMP requirements and records kept of trainings. გაფორმებული და ხელმოწერილია მუშახელის ტრენინგის ოქმი ჯანდაცვისა და უსაფრთხოების საკითხებზე. ტრენინგის ანგარიშები მომზადებულია და ინახება საიტის კვამზე.	✓				უსაფრთხოების საკითხებზე ტარდება ტრენინგები. იცნება ტექნიკური უსაფრთხოების ვერნაკლი, სამუშაო პოზიციდან გამოშლინარე და ტარდება სამუშაოზე მიღებისას პირველადი ინსტრუქტაჟი. ყოველდღიურად იცნება სამუშაოს დაწყებამდე (toolbox talk)
-----	---	---	--	--	--	--

2 Permits, Licenses and Contracts

2.1	The Contractor has a permit or relevant contract from the Municipality for final disposal of construction waste/ კონტრაქტორის მიღებული აქვს სამშენებლო ნარჩენების საბოლოო განთავსების ნებართვა ან შესაბამისი კონტრაქტი ადგილობრივ ორგანოებთან.	✓				ადგილობრივ ორგანოებთან არსებობს სამშენებლო ნარჩენების ტრანსპორტირება საბოლოო განთავსების ნებართვა.
2.2	The Contractor has a permit for final disposal of municipal waste. კონტრაქტორს მიღებული აქვს საყოფაცხოვრებო ნარჩენების საბოლოო განთავსების ნებართვა.	✓				ადგილობრივ ორგანოებთან არსებობს საყოფაცხოვრებო ნარჩენების განთავსების ნებართვა.
2.3	The Contractor has executed the contract with the licensed organization on the hand-over and disposal of hazardous waste. კონტრაქტორს გაფორმებული აქვს სახიფათო ნარჩენების გადაცემისა და გატანის ხელშეკრულება ლიცენზირებულ ორგანიზაციასთან.	✓				საიტზე მოწყობილია სახიფათო ნარჩენების განთავსების დროებითი საწყობი.
2.4	The Contractor has a license for tree felling/ კონტრაქტორს გააჩნია ლიცენზია ხის ქრისთვის.				✓	კონტრაქტორი არ აწარმოებს ხეების ქრას

3 Performance of civil works

3.1	სამშენებლო ტერიტორიის სრულად შემოღობვა Adequate fencing of construction area from all sides	✓				სრულად შემოღობილია
3.2	საკეტიანი შესასვლელი კარის მოწყობა, სტანდარტული გამაფრთხილებელი და საინფორმაციო ნიშნები აღჭურვა Arrangement of lockable gate with standard warning and information signs	✓				საკეტიანი კარი მოწყობილია
3.3	სამშენებლო ტერიტორიაზე და პერიმეტრზე სტანდარტული გამაფრთხილებელი და საინფორმაციო ნიშნების განთავსება Placement of standard warning and information signs at the perimeter and inside of construction area	✓				სამშენებლო ტერიტორიაზე არსებობს გამაფრთხილებელი და საინფორმაციო ნიშნები

3.4	ღია დატოვებულ თხრილებზე და ქუბზე უსაფრთხოების ღერძების, ბარიერების და გამაფრთხილებელი ნიშნების განთავსება Installation of safety signs/tapes and trench side barriers around of open trenches	✓				საიტზე ღია დატოვებულ თხრილები არ არის
3.5	1,5 მეტრზე მეტი სიღრმის ტრანშეებში კედლების გამაგრება Strengthening of walls of the deep trenches (>1.5m) by boards	✓				1,5 მეტრზე მეტი სიღრმის ტრანშეები ითხრება შესაბამისი წყების დაფით
3.6	დასახლებულ ადგილებში ღია დატოვებულ თხრილებზე დროებითი გადასასვლელების მოწყობა Installation of proper temporary wooden/metal walkways/planks across open trenches in settlement areas				✓	დასახლებულ ადგილებში ღია დატოვებული თხრილები არ არის
3.7	სამშენებლო ტერიტორიაზე, სამუშაოების ზონაში არსებული ხეების შემორაგვა (დაზიანების თავიდან აცილების მიზნით) Protect all trees nearby construction zone to avoid its damage	✓				ობიექტის ტერიტორიაზე ხეები დაცულია შემორაგვლია დაზიანებისგან და აღნიშნულია შესაბამისი გამაფრთხილებელი ნიშნებით.

3.8	ექსკავაციის დროს, ნიადაგის ნაყოფიერი (დაახლოებით 20-30 სმ სისქის) ფენის მოხსნა და განცალკევებულად გროვებად შენახვა Removal of topsoil (about 30 cm depth) and separately storing in appropriate place				✓	ამ დროისთვის ექსკავაცია არ არის საიტზე.
3.9	სამშენებლო ნარჩენების და ჭარბი ნარჩენი გრუნტის დროული გატანა/განთავსება Timely removal/disposal of construction waste and surplus waste soil	✓				საიტის მწვანე ზოლიდან სადაც იყო განთავსებული ჭარბი ნარჩენი გრუნტი, მოხდა მისი უკუჩაყრა.
3.10	სამშენებლო ტერიტორიის დამის საათებში განათება Provide adequate lighting of construction territory	✓				სამშენებლო ტერიტორია განათებულია მთელ პერიმეტრზე
3.11	სამშენებლო ტერიტორიის შესაბამისად მოწყობა მასალების და მოწყობილობების და დანადგარების ორგანიზებული განთავსება (საჭიროების შემთხვევაში) Proper arrangement of construction site and segregation/storing of construction materials/equipment (bring the material when required)				✓	ტერიტორიაზე არსებობს მასალებისა და მოწყობილობების განთავსებული ადგილები
3.12	სამშენებლო ტერიტორიაზე საწვავის და საპოხი მასალების დაღვრის შედეგების სალიკვიდაციო ნაწერების ქვიშა, ნახერხი, მვირე ზომის ავზი და სხვა) ხელმისაწვდომობა Availability of proper fuel/oil spill response items (sand, sawdust, special containers) at the construction site	✓				ტერიტორიაზე ხელმისაწვდომია ქვიშა ნახერხი ავზი და სხვა.
3.13	საწვავის და საპოხი მასალების კონტეინერების განთავსება მხოლოდ სპეციალურ გადახურულ ადგილებში Allocation of fuel and lubricants containers at the special dedicated place (with roofing and concrete flooring)	✓				ინახება სპეციალურ გამოყოფილ გადახურულ შემორაგულ ბეტონის მოწყობილ ფილაზე, სადა განთავსებულია ცეცხლმაქრი (ABCE კატეგორის)

3.14	სამშენებლო ტერიტორიაზე საყოფაცხოვრებო ნარჩენებისთვის თავსახურიანი კონტეინერის განთავსება და შესაბამისი წარწერებით აღჭურვა (მაგ. "HOUSEHOLD WASTE") Placement of proper Household Waste container at the special dedicated place with relevant indication signs (for example "Household Waste")	✓			თავსახურიანი კონტეინერები განთავსებულია ობიექტის გამოყოფილ პერიმეტრზე, შესაბამისი წარწერებით და მარკირებით.
3.15	სამშენებლო ტერიტორიაზე სახიფათო ნარჩენებისთვის თავსახურიანი კონტეინერის განთავსება და შესაბამისი წარწერებით აღჭურვა (მაგ. "HAZARDOUS WASTE") Placement of proper Hazardous Waste container at the special dedicated places with relevant indication signs (for example "Hazardous Waste")	✓			ობიექტის ტერიტორიაზე არის სამიზო ნარჩენების კონტეინერი, და შესაბამისი წარწერით.
3.16	სამშენებლო ტერიტორიაზე ან მის გარეთ ტრანსპორტისთვის პარკირების ადგილის მოწყობა და ნიშნით აღჭურვა (მაგ. P) Arrangement of proper Parking area at the adequate place inside/outside of construction territory with relevant sign (for example P)	✓			ობიექტის ტერიტორიაზე მოწყობილია პარკინგის ადგილი
3.17	სამშენებლო მასალების და ნარჩენების ტრანსპორტირების დროს ავტოტრანსპორტის სპეციალური საფარით (ბრუნენტი, ტენტი და სხვა)	✓			სატვირთო მანქანები იხურება ბრუნენტი

	აღჭურვა Use tarpaulins cover during materials transportation				
3.18	საქირობიდან გამომდინარე მტვრის წარმოქმნის პრევენცია Dust generation prevention activities (when needed)	✓			საიტის მოხრეშვითა და სპრინკლერების მიმდინარეობის მორწყვა მშრალ ამინდში.
3.19	მუშების და ინჟინერ-ტექნიკური პერსონალის მიერ ინდივიდუალური დაცვის საშუალებების (ჩაფხუტი, ჯილეტი, ხელთათმანი, ჩექმები, დამცავი სათვალე, და სხვა) სრულად გამოყენება Ensure that all workers are provided with and use appropriate Personal Protective Equipment - helmets, hand gloves, boots, masks, safety belts	✓			მუშები ინჟინერ-ტექნიკური პერსონალი და ვიზიტორები სრულიად გამოიყენებენ ინდივიდუალური დაცვის საშუალებებს
3.20	სიმაღლეზე მუშაობის დროს სპეციალური დამცავი აღჭურვილობის გამოყენება Use of special safety equipment during working at heights	✓			გამოიყენება სპეციალური დამცავი უსაფრთხოების ქამარი
3.21	სამშენებლო ტერიტორიის მუდმივად დალაგება და დასუფთავება Regularly cleaning of construction territory	✓			მიმდინარეობს სატის მუდმივი შეთვალყურება ინჟინერ-ტექნიკური პერსონალის მიერ დალაგება და დასუფთავებაზე.
4 Monitoring Measurements					

4.1	Monitoring measurement data (air, water, soil, erosion, noise, dust, vibration, etc). წყლის, ჰაერის, ვიბრაციის, ეროზიის, ხმაურის, მტვრის და ნიადაგის მონაცემების გაზომვების მონიტორინგი.	✓			მონიტორინგის განხორციელება ხდება სსემა-ის მონიტორინგის გეგმის შესაბამისად (კვარტალური, სამ თვეში ერთხელ) მონიტორინგი ჩატარდა 12 ივლისს 3:34 PM
5 Top Soil Protection					
5.1	Topsoil is stripped and stored according to standard procedures and used further for landscaping and reinstatement. ნიადაგის ბიოპუმუსოვანი ფენის დაცვა			✓	ნიადაგის ბიოპუმუსოვანი ფენის მოწრა, ექსკავაცია არ მიმდინარეობს საიტზე
6 Safety Measures					
6.1	The workers use all personal safety equipment required for individual technological processes (hard hats, gloves, respirators, glasses, etc). მუშახელი იყენებს გალკული ტექნოლოგიური პროცესებისათვის აუცილებელ პირად დამცავ საშუალებებს (ჩაფხუტი, ხელთათმანი, რესპირატორები, სათვალეები და ა.შ.)	✓			გამოიყენება მტვრის დამცავი რესპირატორი, ყურის დამცავი საშუალებები, უსაფრთხოების დამცავი სათვალე.
6.2	The sites are provided with the fire fighting and emergency medical aid kits, site is fenced, site lightning, signs are installed, etc. სამშენებლო ობიექტზე განთავსებულია ხანძარსაწინააღმდეგო და სასწრაფო სამედიცინო დახმარების საბაზისო ნაკრები. საიტი შემოღობილია, განათება და მონტაჟებულია, საინფორმაციო დაფები/აბრები გაკრულია და სხვ...	✓			საიტი შემოღობილია, განათება და მონტაჟებულია, ხანძარსაწინააღმდეგო და სასწრაფო სამედიცინო დახმარების საბაზისო ნაკრები მოწყობილია.
7 Works Completion					
7.1	After completion of main works, the site undergoes final cleanup, harmonization with outward landscape and landscaping. ძირითად სამუშაოთა დასრულებისას წარმოებს ობიექტის საბოლოო დასუფთავება, გარე ლანდშაფტთან პარმონიზება და გამწვანება.			✓	შესრულდება სამშენებლო სამუშაოების დასრულების შემდეგ
7.2	After completion of the operations in the quarry or its certain section, the idle material is backfilled, compacted, terraced and harmonized with the landscape. კარიერის ან მისი გალკული უბნის ექსპლუატაციის დასრულებისას წარმოებს ფუფი მასალის უკუაყრა, კომპაქტირება, ტერასირება, და ლანდშაფტთან პარმონიზება.			✓	შესრულდება სამშენებლო სამუშაოების დასრულების შემდეგ
7.3	Final Post Construction Environmental Audit/monitoring is conducted and Final Environmental Audit Report is prepared //საბოლოო გარემოს დაცვის მონიტორინგი/აუდიტი ჩატარებულია და საბოლოო გარემოს დაცვის აუდიტის ანგარიში მომზადებულია.			✓	შესრულდება სამშენებლო სამუშაოების დასრულების შემდეგ

შენიშვნა/Comment: მიმდინარეობს საიტზე კომერს ანწეს გამაგრება აწვეით სამუშაოები .

შესაბამისი ფოტომასალა/Photo materials:





ANNEX E: NEAR MISS REPORTS PREPARED BY DAGI, UNDER TBI-01 PROJECT




Near Miss Report, February 2020

Near Miss Description of Near Miss (Include details of operations & activities)	D.M.Y.	Corrective/Preventive,action taken or recommendation
<p>Worker suspended platform not used fall arrest system (safety belt). Not installed safety hard barricade, High risk of workers health damage!</p> 	<p>18.02.2020.</p> <p>15.02.2020.</p>	<p>Stop work. All person must use fall arrest or (safety belt) arrest who works at the Height. (need to be fined, so as not to be repeated again) timely installed safety hard barricade.</p>    <p>Must be cleaned all wood materials or sealed separately storage. Need housekeeping. all rubbish must be removed, housekeeping all site and timely discharge waste.</p>

<p>On the wooden material there are nails, which can damage the all personals on the site. construction rubbish, all site need housekeeping and removal waste.</p> 		
<p>Danger open hole.</p> 	<p>22.02.2020.</p>	<p>Close all open hole, with solid materials and set the warning signs e.g. (Don't step).</p> 
<p>Saw tool is dangerous, working personal damage.</p>  <p>. all site need housekeeping and removal waste.</p>	<p>21.02.2020.</p>	<p>use a safe protected saw tool</p> 
	<p>17.02.2020.</p>	<p>Must be cleaned Green zone, timely discharge waste</p>

 <p data-bbox="272 510 603 705">Dangerous, damage to workers, On the wooden material there are nails, formwork not correctly dismantling, which can damage the all worker and visitors on the site. construction rubbish, on the 9 floors need housekeeping and removal</p> 	<p data-bbox="624 779 730 801">29.02.2020.</p>	<p data-bbox="868 645 1155 840">Must be cleaned all wood materials of nails and correctly dismantle formwork. Need housekeeping. all rubbish must be removed, housekeeping 9 floors and timely discharge waste.</p>
--	--	---

Near Miss Report, April 2020

<p><i>NEAR MISS</i> <i>DESCRIPTION OF NEAR MISS</i> <i>(INCLUDE DETAILS OF OPERATIONS</i> <i>& ACTIVITIES)</i></p>	<p><i>D.M.Y.</i></p>	<p><i>CORRECTIVE/PREVENTIVE, ACTION</i> <i>TAKEN OR RECOMMENDATION</i></p>
<p><i>CONSTRUCTION RUBBISH, ALL SITE</i> <i>NEED HOUSEKEEPING AND</i> <i>REMOVAL WASTE.</i></p>  <p><i>DANGEROUS, DAMAGE TO</i> <i>WORKERS, ON THE WOODEN</i> <i>MATERIAL THERE ARE NAILS,</i> <i>FORMWORK NOT CORRECTLY</i> <i>DISMANTLING, WHICH CAN DAMAGE</i> <i>THE ALL WORKER AND VISITORS ON</i> <i>THE SITE. CONSTRUCTION RUBBISH,</i> <i>ON THE 9 FLOORS NEED</i> <i>HOUSEKEEPING AND REMOVAL</i></p> 		<p><i>NEED HOUSEKEEPING. ALL</i> <i>RUBBISH MUST BE REMOVED,</i> <i>HOUSEKEEPING ALL SITE AND</i> <i>TIMELY DISCHARGE WASTE.</i></p>  <p><i>MUST BE CLEANED ALL WOOD</i> <i>MATERIALS OF NAILS AND</i> <i>CORRECTLY DISMANTLE</i> <i>FORMWORK. NEED</i> <i>HOUSEKEEPING. ALL RUBBISH</i> <i>MUST BE REMOVED,</i> <i>HOUSEKEEPING 9 FLOORS AND</i> <i>TIMELY DISCHARGE WASTE.</i></p>
<p><i>NON-COMPLIANCE NOTES,</i></p>	<p><i>D.M.Y.</i></p>	<p><i>CORRECTIVE ACTION PLAN(CAP)</i></p>

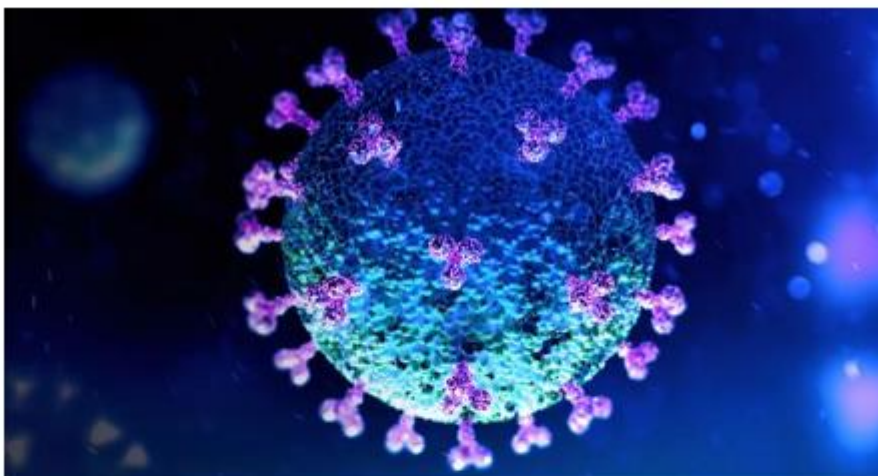
ANNEX F: COVID 19 EMERGENCY MANAGEMENT PLAN



**Georgia: CONSTRUCTION SUPERVISION CONSULTANCY SERVICES
FOR URBAN SERVICES IMPROVEMENT INVESTMENT PROJECT (USIIP)**

Financed by the Asian Development Bank and Government of Georgia

COVID-19 Emergency Management Plan in Construction Sector



Prepared by: **EPTISA** - Supervision Consultant
Tbilisi, Georgia

*For: Ministry of Regional Development & Infrastructure (MRDI)
United Water Supply Company of Georgia (UWSCG)*

Content

1. PREAMBLE	3
1.1 Project Description	3
1.2 Coronavirus	3
2. PURPOSE	4
3. CONTROLLING RISKS ON SITE.....	5
3.1 Screening workers coming to site.....	5
3.2 Workplace Mapping.....	7
3.3 Physical Distancing.....	7
3.4 Hygiene	8
3.5 Shared tools, plant and equipment	8
3.6 Cleaning and Disinfecting	9
3.7 Personnel hoists	9
3.8 Personal Protective Equipment (PPE)	10
3.9 Common areas.....	11
3.10 Inspections	11
3.11 Travel.....	11
3.12 General Communication	12
3.14 Other measures	12
3.15 Vulnerable workers.....	12
4. Summary of recommendations and responsibility	13
5. Covid-19 informational banners.....	15

1. PREAMBLE

1.1 Project Description

1. The overall aim of the project is to improve the health condition of residents by addressing the problems associated with poor water and sewerage services in the towns Kutaisi, Tbilisi. The objective of the project is to solve the most urgent public health problems through the installation of new water systems; new water and sewerage networks; and new treatment facilities. The 'water supply' component aims to augment water production, treatment capacity and maintain water pressure for 24 hours a day.
2. The civil works contracts award sequence is as follow:

Contract Package	Contractor	Start Date	Completion Date
KUT-01	SMK Ulusal Insaat Ve Ticaret	8-Jun-15	28-Mar-20
TBI-01	DAGI Ltd.	01-Mar-16	29-Sep-19
ABA-01	"AS Inshaat-N" LLC	02-Feb-18	14-Mar-20
GUD-03	"China Nuclear Industry 23 Construction Co." LTD	17-Jul-19	06-Jun-22

3. Project Management Organisation

- Executing Agency (EA) - Ministry of Regional Development and Infrastructure (MoRDI)
- implementing agency (IA) - United Water Supply Company of Georgia (UWSCG)
- Supervision Consultant – Eptisa
- Contractors – SMK Ulusal Insaat Ve Ticaret; DAGI Ltd; "AS Inshaat-N" LLC; China Nuclear Industry 23 Construction Co. - LTD

1.2 Coronavirus

4. Coronaviruses are a large family of viruses that cause respiratory infections. These can range from the common cold to more serious diseases. Coronavirus (COVID-19) is a disease caused by a new form of coronavirus. It was first reported in December 2019 in Wuhan City in China.
5. Health authorities around the world believe the coronavirus (COVID-19) is spread from close contact with an infected person, mostly through face-to-face contact or between members of the same household. The coronavirus (COVID-19) is spread by people with symptoms when

they cough or sneeze. People may also pick up the coronavirus (COVID-19) from surfaces contaminated by a person with the infection.

6. Studies suggest that COVID-19 may persist on surface for a few hours or up to several days. This may vary under different conditions such as the type of surface, temperature or humidity of the environment.
7. A coronavirus infection can cause mild to severe respiratory illness. The most common coronavirus (COVID-19) symptoms reported are:
 - Fever
 - Breathing difficulties and breathlessness
 - Cough
 - Sore throat
 - Fatigue or tiredness.
8. Coronavirus (COVID-19) is most likely to spread from person-to-person through:
 - Close contact with an infected person.
 - Touching objects or surfaces (such as door handles or tables) contaminated by a person with the infection.
9. Close contact means having face-to-face contact for more than 15 minutes with someone who has a confirmed case of coronavirus (COVID-19) – or alternatively sharing a closed space with them for more than two hours.
10. Close contact can happen in many ways, but examples include:
 - Living in the same household or household-like setting (for example, a boarding school or hostel)
 - Direct contact with the body fluids or laboratory specimens of a confirmed case
 - Being in the same room or office for two hours or more
 - Face-to-face contact for more than 15 minutes in some other setting such as in a car or a lift or sitting next to them on public transport.

2. PURPOSE

11. The purpose of these document for the Construction sector, is to:
 - Provide direction to employers and workers
 - Outline the steps to be taken to best provide a safe and healthy environment, and
 - Identify the action available in the event of interruption to building and construction work, as a result of the coronavirus (COVID-19) pandemic.

12. The Document is intended to have application across all sectors of the building and construction sector. Construction sites are diverse and vary in complexity. To allow for flexible interpretation of these guidance, it is recommended that employers apply a risk-based approach and implement reasonably practical controls based on the environment and specific hazards at each construction site.
13. This Document have been developed to maintain the safe operation of construction sites, ensuring the safety of workers.
14. Following of these recommendations these is necessary to minimize and avoid the closure of any construction site.
15. The recommendations apply to all personnel attending on a building and construction site or project, whether management, staff, employees, contractors or service providers.

3. CONTROLLING RISKS ON SITE

16. To assist with providing and maintaining safe operations during coronavirus (COVID-19) the below measures should be implemented to assist in providing a safe and healthy environment at work.
 - Screening workers coming to site
 - Workplace Mapping
 - Physical Distancing
 - Hygiene
 - Shared Tools, Plant and Equipment
 - Cleaning and Disinfecting
 - Personnel Hoists
 - Personal Protective Equipment
 - Common Areas
 - Inspections
 - Travel
 - General Communications
 - Other measures
 - Vulnerable workers

3.1 Screening workers coming to site

17. To minimize the risk of transmission of coronavirus (COVID-19) on site, employers must implement a two-phase screening process; phase one being an initial declaration and phase two on going daily screening.

18. Initial declaration is to be conducted by all workers (this includes any person who attends site), including current and new-starters. Each worker must provide a declaration that they to the best of their knowledge:
 - have not been diagnosed with coronavirus (COVID-19) in the last 14 days, or
 - are not in a period of 14 day quarantine as directed by a health professional, or
 - have not been overseas in the last 14 days, or
 - have not been in contact with anyone who has coronavirus (COVID-19), or
 - have not been in contact with anyone who is currently being tested for coronavirus (COVID-19), or
 - do not have anyone in their household who has symptoms consistent with COVID-19.
19. Once the initial declaration has been made by the worker, ongoing screening (phase 2) should be conducted for every worker prior to the start of their shift, asking to the best of their knowledge:
 - have they been overseas in the last 14 days, or
 - have they been in contact with anyone who has coronavirus (COVID-19), or
 - have they been in contact with anyone who is currently being tested for coronavirus (COVID-19), or
 - do they have anyone in their household who has symptoms consistent with COVID-19.
20. If a worker declares any of the above they may be required to self-isolate.
21. Screening should be conducted, whilst maintaining safe distances or over the phone before entering site, on a mobile app, via text message system, or other non-contact methods. It is advisable to have a system in place that limits the sharing of pens/ notebooks/ computers etc.
22. If a worker has recently had close contact with a confirmed case, they need to:
 - self-isolate at home for a period of 14 days and follow the self-isolation Guidelines
 - not attend work
 - contact their employer
 - seek urgent medical attention if they have symptoms consistent with COVID-19
 - not return to work until they have been cleared by a medical practitioner.
23. If a worker is experiencing symptoms consistent with COVID-19 or had close contact with a confirmed case, they must:
 - not attend work
 - contact their employer for further advice and;
 - not return to work until they have been cleared by a medical practitioner.

3.2 Workplace Mapping

24. In the event of an employee being confirmed as having COVID-19, those who are potentially affected need to be quickly identified.
25. Employers should implement processes to record the schedule and work locations for workers that enables tracing of those who have come into contact with the confirmed case.
26. The record should include:
 - day and time work was undertaken
 - members of teams that worked together
 - specific work area on the construction site
 - any breaks taken, including time and location
27. Movement between sites, or areas within large sites, should be minimized as much as possible.
28. Where attending multiple sites is necessary (e.g. for HSRs, first aiders, emergency wardens) movement between sites should be recorded in the workplace mapping.

3.3 Physical Distancing

29. Physical distancing of at least 1.5-2 meters should be implemented wherever possible. Employers should consider each work task and whether there is a safe alternative way to undertake the work with an increased distance between workers.
 - Mark safe distances in work, transit and break areas (e.g. on floors and walls).
 - Consider different shift patterns to minimize the number of workers onsite (e.g. AM/PM shifts).
 - Stagger start times, breaks and finish times to avoid congestion in high traffic areas and minimize workers coming into contact with each other as they move around the site.
 - Plan for how physical distancing will be maintained during inclement weather (e.g. use of lunch or crib rooms and amenities).
 - Install temporary physical barriers (e.g. fences, screens) between work areas, where appropriate.
30. Where it is not possible to undertake work tasks and maintain physical distancing, other control measures need to be implemented. For example:
 - Minimize the number of worker to worker interactions that need to be completed within 1.5 meters
 - Minimize the number of workers involved in activities that need to occur within 1.5 meters of each other
 - Provide personal protective equipment (PPE) (e.g. gloves, masks, glasses).

31. Where essential work activities need to be undertaken in restricted spaces (e.g. lift shafts, personnel hoists, lifts), the number of workers working in the space should be minimized.

3.4 Hygiene

32. Good hygiene practices and general cleaning helps with minimizing the spread of coronavirus (COVID-19). Employers should review general hygiene requirements and the cleaning regimes in place.
33. Employers should display health information in prominent locations on the construction site such as tea rooms, site offices, toilets, foyers, lifts and site entrances.
34. Every effort must be made by employers to upgrade personal hygiene and minimize worker to worker contact and all workers must co-operate in all necessary measures to achieve these objectives. These measures need to include:
- Promote regular hand washing with soap for at least 20 seconds. Employers must facilitate regular hand washing by providing ease of access/additional facilities where possible. Communicate to all workers where hand sanitizers are located and encourage their regular use.
 - Promote good cough etiquette by covering your cough and sneeze, or cough into your elbow or shoulder.
 - Avoid touching your nose, eyes or mouth.
 - Provide hand sanitizer and/or hand washing facilities with soap in all site entrances and exits hoists, amenities and areas/levels of the site.
35. Employers must ensure that workers have access to appropriate amenities. Employers should review and revise the number and locations of amenities, to reduce movement around the site.
36. Amenities need to include:
- Hand washing facilities (whether permanent or temporary), such as a wash basin, clean running water, soap and paper towels, placed in strategic locations to ensure employees can access them in a timely manner.
 - Access to hand sanitizer.
 - Rubbish bins with touch-free lids (e.g. foot pedal bins).
 - Thorough and regular sanitation.
 - Appropriate waste management systems.

3.5 Shared tools, plant and equipment

37. Workers should avoid the shared use of tools, plant and equipment wherever possible. For example, drop saws, drills, grinders, ladders or elevating work platforms should not be used by more than one worker.

38. Where it is not possible to eliminate shared use:

- Provide cleaning products (e.g. alcohol spray or solution) where communal tools, plant and equipment are located.
- Keep cleaning products with tools, plant and equipment as they move around the site.
- Ensure all operators thoroughly wash or sanitize their hands before and after every use.
- Ensure all parts of tools, plant and equipment (e.g. including handles, handrails) are wiped down before and after use.

39. The shared use of phones, desks, offices, computers and other devices should also be avoided. Where this is not possible, these items should be regularly disinfected.

3.6 Cleaning and Disinfecting

40. Cleaning and disinfecting of surfaces is to be conducted using cleaning products as per DHHS Cleaning and Disinfection guidelines to reduce coronavirus (COVID-19) Transmission – the specific guidance is available here:

- Cleaning and disinfection of amenities and meal areas must occur between work group breaks
- Cleaning and disinfection of Personnel Hoists should occur at the end of each hoist operator shift
- Implement regular cleaning and disinfection (minimum of twice daily) to 'Frequently Touched Surfaces', surfaces such as toilets, door handles, stair handrails, light switches, lift buttons, table tops.
- Additional cleaning/disinfecting on-site. There must be an increased frequency of industrial grade cleaning/additional cleaning/disinfecting on sites across all areas including particular emphasis on commonly touched/communal surfaces;

3.7 Personnel hoists

41. Workers using hoists and lifts may be at greater risk of exposure to coronavirus (COVID-19), because they are required to be in close contact with others and potentially contaminated surfaces.

42. Control measures to reduce the risk in personnel hoists should include systems of work, physical distancing, personal hygiene, PPE and cleaning.

43. It is acknowledged that not all hoists and lifts are identical in size or dimension, and have varying weight limits.

44. Where it is not possible to implement physical distancing measures in a personnel hoist, all other available control measures need to be used.

45. Control measures may include:

- Limiting worker movement between levels and floors on site, where it is possible and safe to do so.
- Reviewing which hoists are available for use on site and identifying if additional hoists can be used (for example where a partially occupied building is under construction, consider whether a residential lift be used solely for construction persons).
- Physical distancing of 1.5-2 m and hygiene systems to be followed when waiting for hoist, particularly on floors where worker volumes may increase during peak times (start, break, finish times). For example the ground floor, floors with meal or break out spaces and floors with bathroom amenities.
- Determine how many workers can use a hoist at any time (including hoist operator) taking into consideration the limited duration and additional control measures in these Guidelines.
- Mark out hoist floor, identifying:
 - where workers stand
 - what direction they are to face when in the hoist to avoid face to face contact
 - Sequencing of entering and exiting
- Mark the hoist waiting area at each floor ensuring the physical distancing is maintained
- Regularly communicate and remind workers (e.g. through posters, digital displays):
 - diagram of positioning of workers and sequence of worker entering
 - not to touch walls/doors of the hoist
 - advise the cleaning regime in place
- During peak periods have system in place to limit crowding of workers entering/exiting the work area. For example:
 - developing a schedule for use of the hoist
 - Staggering what floors workers are to use the hoists. Hoist operators may be exposed to additional risk. They should:
 - Be provided with PPE that protects them from worker to worker transmission and from touching contaminated surfaces (e.g. face shield or surgical mask/P2 respirator and glasses).
 - Perform frequent hand washing with soap and water or the application of hand sanitizer positioned within the hoist.
 - Where possible, change hoist operator every two hours into a different role.

3.8 Personal Protective Equipment (PPE)

46. Employers must provide information, instruction and training on the safe use, decontamination and maintenance of any PPE provided.

47. Any PPE provided needs to be practical for the work environment (e.g. allowing the necessary visibility and mobility) and properly decontaminated or disposed of at the end of every shift.
48. Employers should monitor and encourage correct use of PPE, for example providing information on posters and digital screens about:
 - Washing or sanitizing hands before putting PPE on, and putting face protection on before gloves
 - Removing gloves before face protection, washing or sanitizing hands after removing PPE and decontaminating or disposing of used PPE safely.

3.9 Common areas

49. Common areas on sites such as the amenities pose risks, and these are reduced by ensuring the following measures are adopted.
50. The time spent in those areas must be limited so as not to breach time constraints recommended by DHHS.
51. Staggering of meal breaks and separation of work groups to achieve maximum personal space and reduce the number of workers accessing those areas at any one time consistent with the Government requirements.
52. Sanitization must occur between occupation of amenities by different work groups
53. Spread out furniture to ensure physical distancing measures in common areas
54. There must be an increased frequency of industrial grade cleaning/additional cleaning with specific emphasis on cleaning after each meal breaks in those areas
55. Workers electing to minimize amenity access
56. Staggered working hours must be considered on sites with appropriate consultation (consideration must be given to Construction Management Plans, and workers must be given adequate notice of a change in hours).

3.10 Inspections

57. During inspections of the sites everyone should ensure all measures are in place to ensure compliance. Employers and Health and Safety Representatives are encouraged to work together to assist in this important objective.

3.11 Travel

58. Adequate arrangements are to be made by workers to ensure their travel to and from work is conducted safely in accordance with Government advice, and that adequate sanitization facilities are in place for workers upon attending the work site and when returning to the work site during work.
59. Workers should ensure that for transport to and from work that they adhere to the hygiene and cleaning guidance, and the physical distancing

60. Work vehicles that are shared should be regularly cleaned to ensure adequate hygiene and protection.

3.12 General Communication

61. Ensuring everyone is informed is fundamental to managing this pandemic and ensuring the safe operations of construction sites.

62. These recommendations have been developed to be communicated to all employers, workers and stakeholders. Everyone is urged to regularly promote and adhere to this document.

63. Site inductions should be updated as required to include information on coronavirus (COVID-19) potential risks and workplace specific controls that have been implemented such as daily screening, health checks and symptoms of coronavirus (COVID-19), staggered start, finish and meal times, good hygiene practices and cleaning regimes and PPE requirements.

64. Toolbox talks should be regularly conducted, and workers are to be encouraged to put forward practical ideas for changing work practices to avoid the spread of coronavirus (COVID-19). Toolbox talks should also provide clarity to workers on leave arrangements for those that cannot work, and to encourage self-reporting and minimize the spread of risk.

65. Toolbox talks should also include updates from the responsible Health Officer as they occur and additional information on the severity of the pandemic and the importance of physical distancing at toolbox meetings.

3.14 Other measures

66. Construction sites are diverse and vary in complexity, employers must apply a risk-based approach and implement reasonably practical controls based on the environment and specific hazards at each construction site. In addition to the aforementioned measures and controls mentioned in this section, employers should consider other measures for implementation such as:

- using alternatives to face to face meetings where practicable,
- reducing the length and size of meetings, especially for critical employees, by requiring some or all to dial in,
- consider off-site fabrication,
- ensuring working from home arrangements are enabled where feasible,
- Structuring management teams to ensure contingency in the event of team members needing to be isolated or quarantined at home.

3.15 Vulnerable workers

67. Has been identified the following groups of people as vulnerable workers in relation to coronavirus (COVID-19):

- people over the age of 70,
- people with chronic diseases (cardiovascular disease, diabetes, bronchial asthma and other respiratory diseases)

68. Where practical, reasonable action should be taken to minimize vulnerable workers from conducting higher risk roles

4. Summary of recommendations and responsibility

Table of Summary of recommendations and responsibility

Activity	Responsible for implementation
To provide employees with the information about the work safety procedures and prevention of virus spread (guided by the recommendations of the Ministry of Internally Displaced Persons from the Occupied Territories, Labor, Health and Social Affairs of Georgia and LEPL I. Sakvarelidze National Center for Disease Control and Public Health);	Employer
To place ads in the workspace about the COVID-19 and its preventive measures defined by the LEPL I. Sakvarelidze National Center for Disease Control and Public Health;	Employer
To ensure maximum use of remote work in relation to those employees who can perform work remotely (administrative personnel);	Employer
To put mattings at the entrance of the lounge room / dining room, with the relevant sign of indication;	Employer
To ensure hand washing at the workspace with appropriate soap and other hygiene products. In case of inability to wash hands, to provide with at least 70% alcohol-based hand cleaning liquids;	Employer
To place hand sanitizers and the instruction for their proper use in a prominent place;	Employer
To ensure that employees have access to hand sanitizers and know how to use them in accordance with the relevant instructions;	Employer
To provide information to all staff and contractors, as well as cleaning staff, on appropriate preventive measures to avoid the spread of coronavirus in the work environment;	Employer
To train the employees on the proper use of personal protective equipment and its subsequent storage / disposal;	Employer
To provide employees with the necessary personal protective equipment (overalls, special shoes, helmet, gloves, medical mask) based on the specifics of their job and establish control over their use;	Employer
Periodically, several times a day ensure natural ventilation of indoor spaces / closets;	Employer
Periodically ensure disinfection of workplaces and frequently used equipment;	Employer
To keep ergonomics in order at the construction site. To ensure the prompt cleaning of workspace and removal of construction waste.	Employer
To ensure placement of closed containers for the disposable napkins and other hygiene waste used by both employees and visitors.	Employer

Follow the rules of hygiene at your workplace;	Employee
Carry out the work process in accordance with the Emergency Action Plan defined by the employer / work safety manager;	Employee
Avoid shaking hands and direct contact with others (touch, etc.) while saluting;	Employee
Avoid gathering, the work of more than 10 people on one work platform at a safe distance (less than 2 m) is not recommended;	Employee
When performing the work, make full use of the personal protective equipment provided by the employer;	Employee
Clean the workplaces and the tools and equipment used during the work process with disinfectants;	Employee
Thoroughly wash your hands with soap and water before and after eating, as well as before and the bathroom. Dry your hands thoroughly after washing;	Employee
Use alcohol-based hand sanitizers in case if you are unable to wash and dry your hands;	Employee
Keep a safe distance (not less than 2 m);	Employee
Cover your mouth with clean napkin or elbow when coughing and sneezing and then throw the used disposable napkin in the trash;	Employee
Avoid touching your eyes, nose, or mouth with your hands.	Employee

5. Covid-19 informational banners



ԱՆՏՐԻ ՎՈՐՈՑԱՆՈՒՄ
COVID-19

ՔՐԱՅԻՆ ԻՆՏԵՐՆԱԿԱՆ ԱՆՏՐԻ ՎՈՐՈՑԱՆՈՒՄ

քայլերը ինտերնալ ևս
արդյունավետ էրաներ

ինտերնալային կրթական
բաժնուկներով ևս ինտերնալային
քայլեր

կրթական հաստատություններին
հարթիկ ծախք

առավել արդյունավետ ևս
կրթականություն
բաժնուկներով ևս ինտերնալային
քայլերով ևս ինտերնալային
քայլերով COVID-19 հարցերով

Ինչ քայլեր արժեք ցուցաբերում
արդյունավետ

Հարցախոյզ COVID-19
World Health Organization Հ. Վորլդ Թեռն 118 915, 12 95
ՀՀ ԿԸՀ 11 41 2119

ԱՆՏՐԻ ՎՈՐՈՑԱՆՈՒՄ
COVID-19

ՌԵՍՈՐՏ ԵՎ ԻՆՏԵՐՆԱԿԱՆ ՔՐԱՅԻՆ ՎՈՐՈՑԱՆՈՒՄ

Քայլերը ինտերնալ ևս
արդյունավետ էրաներ

Ինտերնալային կրթական
բաժնուկներով ևս ինտերնալային
քայլեր

Ինտերնալային կրթական
բաժնուկներով ևս ինտերնալային
քայլերով COVID-19 հարցերով

Ինչ քայլեր արժեք ցուցաբերում
արդյունավետ

Հարցախոյզ COVID-19
World Health Organization Հ. Վորլդ Թեռն 118 915, 12 95
ՀՀ ԿԸՀ 11 41 2119

ԱՆՏՐԻ ՎՈՐՈՑԱՆՈՒՄ
COVID-19

ՌԵՍՈՐՏ ԵՎ ԻՆՏԵՐՆԱԿԱՆ ՔՐԱՅԻՆ ՎՈՐՈՑԱՆՈՒՄ

Քայլերը ինտերնալ ևս
արդյունավետ էրաներ

Ինտերնալային կրթական
բաժնուկներով ևս ինտերնալային
քայլերով COVID-19 հարցերով

Ինչ քայլեր արժեք ցուցաբերում
արդյունավետ

Հարցախոյզ COVID-19
World Health Organization Հ. Վորլդ Թեռն 118 915, 12 95
ՀՀ ԿԸՀ 11 41 2119

ԱՆՏՐԻ ՎՈՐՈՑԱՆՈՒՄ
COVID-19

ՎՈՐՈՑԱՆՈՒՄ ԵՎ ԻՆՏԵՐՆԱԿԱՆ ՔՐԱՅԻՆ ՎՈՐՈՑԱՆՈՒՄ

Քայլերը ինտերնալ ևս
արդյունավետ էրաներ

Ինտերնալային կրթական
բաժնուկներով ևս ինտերնալային
քայլերով COVID-19 հարցերով

Ինչ քայլեր արժեք ցուցաբերում
արդյունավետ

Հարցախոյզ COVID-19
World Health Organization Հ. Վորլդ Թեռն 118 915, 12 95
ՀՀ ԿԸՀ 11 41 2119

ԱՆՏՐԻ ՎՈՐՈՑԱՆՈՒՄ
COVID-19

ՎՈՐՈՑԱՆՈՒՄ ԵՎ ԻՆՏԵՐՆԱԿԱՆ ՔՐԱՅԻՆ ՎՈՐՈՑԱՆՈՒՄ

Քայլերը ինտերնալ ևս
արդյունավետ էրաներ

Ինտերնալային կրթական
բաժնուկներով ևս ինտերնալային
քայլերով COVID-19 հարցերով

Ինչ քայլեր արժեք ցուցաբերում
արդյունավետ

Հարցախոյզ COVID-19
World Health Organization Հ. Վորլդ Թեռն 118 915, 12 95
ՀՀ ԿԸՀ 11 41 2119

ԱՆՏՐԻ ՎՈՐՈՑԱՆՈՒՄ
COVID-19

ՎՈՐՈՑԱՆՈՒՄ ԵՎ ԻՆՏԵՐՆԱԿԱՆ ՔՐԱՅԻՆ ՎՈՐՈՑԱՆՈՒՄ

Քայլերը ինտերնալ ևս
արդյունավետ էրաներ

Ինտերնալային կրթական
բաժնուկներով ևս ինտերնալային
քայլերով COVID-19 հարցերով

Ինչ քայլեր արժեք ցուցաբերում
արդյունավետ

Հարցախոյզ COVID-19
World Health Organization Հ. Վորլդ Թեռն 118 915, 12 95
ՀՀ ԿԸՀ 11 41 2119

ANNEX G: CONSTRUCTION SITE PREVENTION COVID-19

Construction Site for prevention COVID-19, TBI-01





ANNEX F: GENERAL GUIDELINES RELATED TO INFECTION (COVID-19) CAUSED BY NOVEL CORONAVIRUS (SARS-CoV-2) FOR CONSTRUCTION SECTOR



MINISTRY OF INTERNALLY DISPLACED
PERSONS FROM THE OCCUPIED
TERRITORIES, LABOUR, HEALTH AND
SOCIAL AFFAIRS OF GEORGIA

Labour Conditions Inspection Department
Create Together Safe Working Environment

Annex №2

General Guidance Related to Infection (COVID-19) Caused by Novel Coronavirus (SARS-CoV-2) for Construction Sector

Note: In accordance with Order N281/N of the Minister of Internally Displaced Persons from the Occupied Territories, Labour, Health and Social Affairs of Georgia on "the rule for Examination for Short-term Employment Disability and Issuance of Doctors Note", the Ministry of Internally Displaced Persons from the Occupied Territories, Labour, Health and Social Affairs of Georgia will issue an equivalent document to the doctors excuse note (Medical Certificate) to persons quarantined in order to prevent the spread of coronavirus. The document will serve as the basis to receive monthly payment and therefore, the working days spent in quarantine or in self-isolation will be legitimate and fully paid to the employees. In order to get the certificate, an interested person has to apply to the Ministry of Internally Displaced Persons from the Occupied Territories, Labour, Health and Social Affairs of Georgia at - info@msh.gov.ge.

For further information, please contact:

☎ 15 05

☎ 116 001

StopCoV.ge

The job of builders involves constantly changing work places and work activity existing in open-air conditions. For this reason, in terms of virus spread, construction falls within the medium risk sector because its specificity covers natural ventilation. Nevertheless, it is important to consider the following preventive measures at construction work.



The staff must not appear in the workplace if they :

- Left the affected country over the past 14 days;
- Were in close contact with infected person/persons for the past 14 days (they must be self-isolated/quarantined as per the rule);
- Have symptoms of respiratory infection (coughing, temperature, sneezing, difficulty in breathing, general weakness etc.);
- Are among the ones who have high risk of getting infected with COVID-19 or serious complications: over 70 years of age, people suffering from chronicle diseases (cardio-vascular diseases, diabetes, bronchial asthma and other respiratory diseases).

Employer's responsibilities

- Whether or not the incidence of infection is detected, employer should develop an emergency action plan to support reduction of working days missed due to illness, and in case of detection – prevention of spread;
- Provide employees with information about safe working procedures and about prevention of virus spread (guide with the recommendations defined by LEPL L. Sakvarelidze National Center for Disease Control and Public Health of the Ministry of Internally Displaced Persons from the Occupied Territories, Labour, Health and Social Affairs of Georgia);
- Inside the working space post announcements about COVID-19 and about the preventive measures that have been identified by LEPL L. Sakvarelidze National Center for Disease Control and Public Health;
- In relation to the employees who can perform job remotely (administrative personnel) ensure as much as possible use of such working mode;
- At the entrances of break room/dining room, place disinfecting rugs with relevant mandatory sign marking;
- Provide hand-washing facility with soap and other disinfectants. If hand-washing facility is not feasible, at least 70% alcohol-based hand cleansing liquid should be used;
- Visibly place the hand sanitizers and post the rules of their proper use;
- Make sure that employees have access to hand sanitizers and are aware of their use with proper rules;
- Provide all employees and contractors, personnel responsible for cleaning with information about relevant preventive measures to avoid spread of coronavirus in the working environment;
- Train the employees in proper use and further storage/removal of personal protective equipment and disinfectants;

StopCoV.ge

1505

116 001

- Depending on their work specificity, provide the employees with necessary personal protective equipment (protective clothing, protective shoes, helmet, gloves, respirator) and establish control on their use;
- Periodically, several times a day ensure natural ventilation of closed spaces/facilities;
- At certain periodicities disinfect frequently used working equipment and working places;
- Maintain ergonomics at construction site. Ensure timely cleaning of working space and timely disposal of construction waste.
- For employees and visitors ensure closed containers for used disposable tissues and other used hygienic waste in the working space.

Employees' responsibilities

Ensuring proper hand hygiene regularly and thoroughly is the best way to be protected from most of the viruses. Therefore, it is necessary to take the following measures in the workplace:

- Follow hygiene rules in your workplace;
- Carry out the working process in accordance with emergency situations action plan defined by employer/occupational safety manager;
- When greeting do not shake hands and avoid contact with others (touching etc.);
- Avoid gatherings, it is recommended not more than 10 people in one working platform by keeping a safe distance (at least 2 m);
- While performing your work, fully use personal protective equipment provided by the employers;
- Treat with disinfectants the working places and tools used in the course of the work;
- Before and after taking meals, before and after using the restrooms thoroughly wash your hands with soap and water. After washing dry your hands well;
- If you can not wash and dry your hands, use alcohol-based hand sanitizers;
- Keep safe distance (at least 2 m);
- While coughing or sneezing, cover the face with a clean tissue or elbow and place used dispensable tissue in the waste bin;
- Avoid touching your eyes, nose and mouth with your hands.





StopCoV.ge 1505 116 001



LPO.